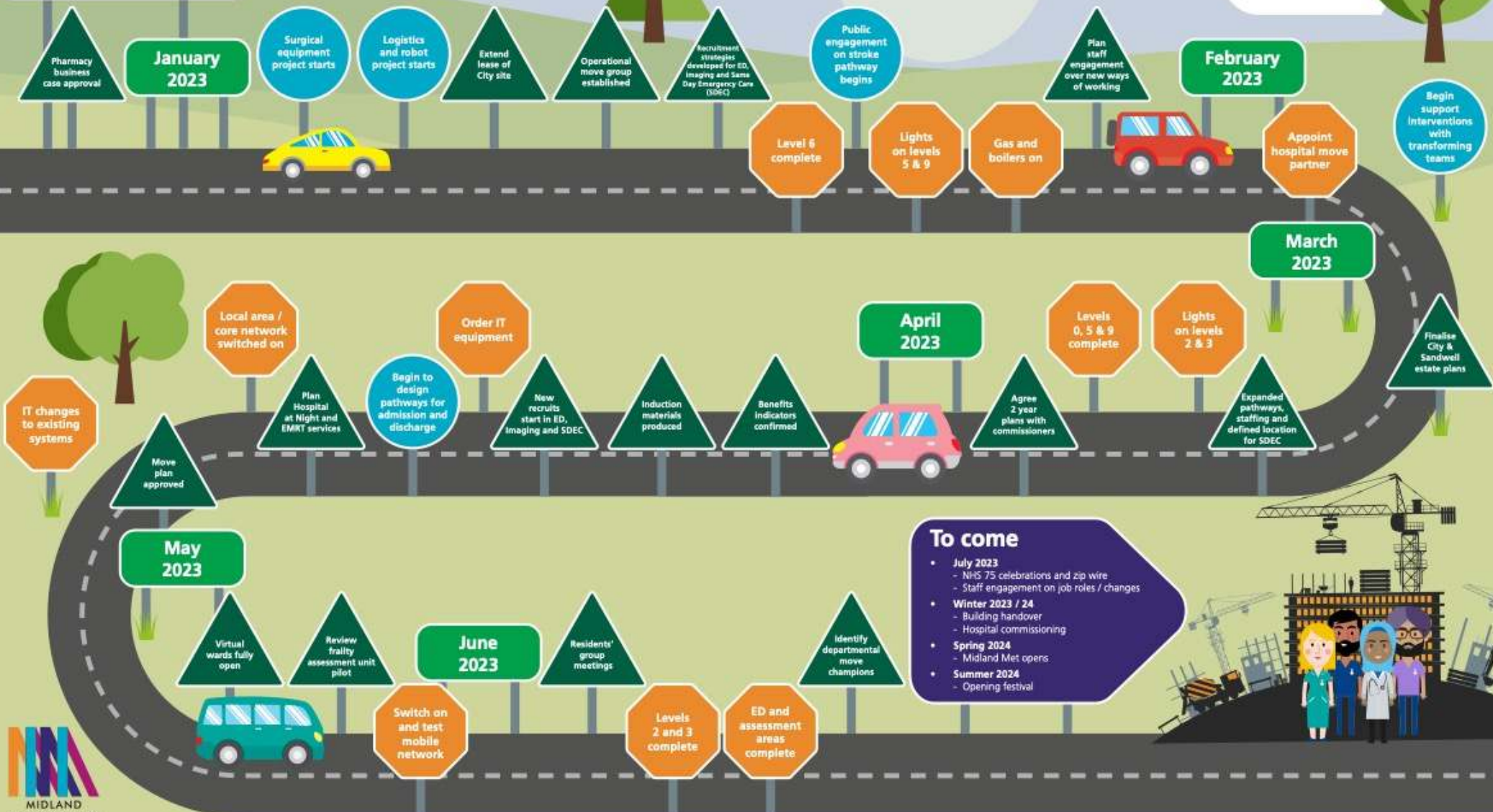


Midland Met Critical Milestones: Jan – June 2023

In progress

- Recruitment to priority posts to support MMUH
- Transformation of services in Same Day Emergency Care, Cardiology and Frailty
- Virtual wards



To come

- July 2023**
 - NHS 75 celebrations and zip wire
 - Staff engagement on job roles / changes
- Winter 2023 / 24**
 - Building handover
 - Hospital commissioning
- Spring 2024**
 - Midland Met opens
- Summer 2024**
 - Opening festival

Annex 2 MMUH Programme Company Leadership and Delivery Team

Managing Director – Rachel Barlow SRO (MD role TBC)
Accountable and Responsible to CEO

Programme Director – Clare Shipton
Accountable and Responsible to the Managing Director

Clinical Safety Officer* TBC
Responsible to the Programmed Director - Aim to start January 23.

MMUH Delivery Director – Liam Kennedy
Accountable and Responsible to the Managing Director

PMO Lead – Rachel Heywood Clarke
Accountable and Responsible to the Programme Director

Workstreams

- Clinical Services
- Clinical Support Services
- Workforce
- Operational Commissioning
- Affordability
- Benefits
- IT
- Comms and Engagement
- Estates
- Construction
- Equipment
- Decommissioning
- Hard FM

Role, responsibilities

<p>Clinical Services Workstream Lead</p> <p>Delivery Director – Liam Kennedy</p>	<p>Clinical Support Services Workstream Lead</p> <p>Delivery Director – Liam Kennedy</p>	<p>Workforce Workstream Lead</p> <p>Delivery Director – Liam Kennedy</p>	<p>Operational Commissioning Workstream Lead</p> <p>Director of Commissioning and Equipping – Jayne Dunn</p>	<p>Finance and Commercial Workstream Lead</p> <p>Simon Sheppard Director of Operational Finance</p>	<p>Benefits Workstream Lead</p> <p>Simon Sheppard Director of Operational Finance</p>	<p>IT Workstream Lead</p> <p>Mark Taylor Head of IT for MMUH</p>	<p>Comms and Engagement Workstream Lead</p> <p>Executive Director of Comms and Engagement – Ruth Wilkins</p>	<p>Estates Workstream Lead</p> <p>Director of Estates Development – Warren Grigg</p>	<p>Construction Workstream Lead</p> <p>Construction Project Director – Richard Malloy</p>
---	---	---	---	--	--	---	---	---	--

Associate Delivery Director – Amanda Geary	Associate Delivery Director – Danielle Joseph	Associate Workforce Director – Robert White	Commissioning Managers Emma Loosley Paul Hazle Jackie Cooper Dawn Webster	Commercial MMUH lead- Warren Grigg	Benefits advisors - PWC	Lead Nurse CIO	Engagement lead – Jayne Salter Scott*	Head of Strategic and Capital Estates – Kevin Reynolds	Trust Construction advisors	
Deputy Chief Nurse- Di Eltringham	Logistics Programme advisors - DHL			SFMs	Benefits Delivery Manager - recruitment due January 23.		Comms lead- Famena Nawaz	Head of Estates Compliance – Paul Davis		Specialist advisors
Deputy Chief Medical Officer – Dr Sarb Clare								EQUANS		Core Team

Group Change Managers 4 / 5 in post/ phased to start Dec 22- Jan 23.

Annex 3 Stakeholder Map

MMUH Programme level stakeholders November 2022			
Involve and keep satisfied		Collaborate and manage closely	
MPs Fund raisers Ward councillors		Balfour Beatty Advisors – Gleeds, Motts, Arups EQUANs NHP Homes England ICBs NHSE /Regional and national West Midlands Combined Authority	BCC and SMBC EPRR partners – Police, Fire, WMAS, LHRP Providers – Walsall, Dudley, UHB, Mental health providers, BCHC TFWM Transport providers Staff - breakdown Trade Unions Universities
Monitor and inform		Consult and keep informed	
General public Media		Patients (include prison service) Healthwatch Health and Wellbeing Boards JHOSC Local residents Local businesses Voluntary sector SCVO/BVSC	Schools and other education providers Faith / community leaders Volunteers Trust contractors Clinical Senate

↑
Power

Interest →