



**MIDLAND
METROPOLITAN**
UNIVERSITY HOSPITAL



Midland Met Monthly

NHS
Sandwell and
West Birmingham
NHS Trust



MidlandMetUH



SWBHnhs



midlandmetuh

Bringing you the latest updates on the Midland Met development and beyond

Issue 02 - March 2023

Community matters: Listening to our near neighbours

Being a good neighbour is a priority for the Trust, as we work towards the opening of the new hospital in Spring 2024. Over the past few weeks our Head of Public and Community Engagement, Jayne Salter-Scott, has been busy promoting a series of meetings for people who live within a mile of Midland Met.

Three events were held and attended by over 120 members of the local community surrounding the new hospital. Chief Executive, Richard Beeken, shared the history and latest updates relating to the new hospital and Rachel Barlow, MD for the Midland Met Programme Company, talked about the clinical model and how Midland Met is a catalyst for regeneration.

Many questions and comments were put to the Trust representatives during the meetings that ranged from concern over parking on nearby streets when Midland Met opens, to job opportunities and community access to the public spaces within and outside the building.

We have committed to continuing to engage with local residents and business owners and will hold our next engagement session themed around traffic, transport and parking where we will invite partners including local transport providers to join us.

As well as concerns about the effect the building will have on nearby streets, it was clear that there was significant interest and enthusiasm from local neighbours who are looking forward to the hospital being open and operational.



Our Near Neighbours meetings were attended by residents keen to hear about Midland Met and ask the questions that mattered most to them.

Brand new spiritual care centre takes shape

On a sunny Friday morning, religious leaders from our communities came together to pay homage to our brand new spiritual care centre being built within Midland Met.

Led by Rev Mary Causer the leaders embarked on a whistlestop tour, visiting wards and departments and taking a moment in the awe-inspiring winter garden before stopping off at their main attraction the brand-new spiritual care centre.

Despite being under construction, the leaders were pleased to see the spiritual care centre taking shape. With spaces to meet, pray or simply contemplate all clearly defined, it is starting to feel like it will be a special place for all patients, staff and visitors.

Rev Mary Causer enthused: "We're here with a group of inter-faith leaders from across our boroughs to see our spiritual care centre, and they are wowed by it. I am wowed by it, the space and the possibilities of what we can do for our communities and what we can do for them. Using it for our communities, bringing them in and using it creatively."

Ragih Muflihi, CEO of the Yemeni Community Association, remarked: "I'm visiting the new hospital today, and it's a wonderful place. My wife is a midwife here at the Trust, my son is training to be a



Rev Mary Causer
SWB Lead Chaplain

Rev Mary Causer hosted a group of inter faith leaders on a tour of Midland Met.

doctor and members of my family work in the healthcare profession. It's a wonderful place for them to come into."

Standing on the balcony of the new winter garden, Rev Mike Sermon said: "It's a fabulous facility, and the views are magnificent from here. I'm privileged to be here and excited that this new facility will serve the communities in this area."

After a successful visit the religious leaders will continue to work together to ensure our new spiritual care centre is a space for everyone of all faiths and none to enjoy.

Hear more from Rev Mary Causer [here](#)



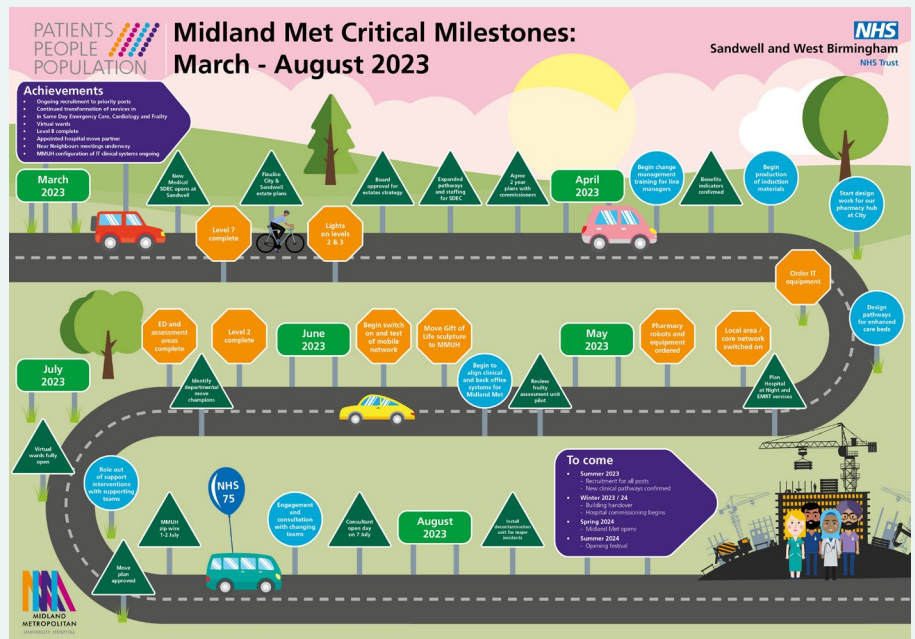
The inter-faith tour took in the fabulous views over the city from the winter garden.

Midland Metropolitan University Hospital (MMUH) is one of the most significant hospital developments in the English NHS, but it's not just a hospital, it's the catalyst in a major development set to regenerate and reinvigorate one of the most deprived areas in the country.



Critical milestones roadmap: March - August 2023

Our roadmap sets out key milestones for the project for the next six months.



The opening of the new Midland Metropolitan University Hospital in 2024 presents a unique opportunity to transform stroke care services. Thanks to a groundbreaking new project led by Clair Finnemore, Therapy Lead for Stroke Services, stroke patients are set to receive faster, more efficient care through the creation of an integrated community stroke service (ICSS).

Launching in May 2023, the integrated community stroke service (ICSS) project will establish new domiciliary stroke rehabilitation services in line with national and regional stroke strategies, creating integrated community stroke specialist teams who will provide intensive, specialist therapy services in the comfort of patients' homes. This home-first model of care will reduce hospital stays, freeing up beds and streamlining the patient journey.

A physiotherapist by trade, Clair is helping to transform stroke services by decoupling acute stroke and rehabilitation services. She explained: “The work we are doing cuts across all disciplines, including therapies, nursing, medicine, estates, social care, psychology, imaging, GPs and operational leads across PCCT and medicine.

“We decided to review the full stroke pathway to ensure those with acute needs can be assessed quickly and those requiring further rehabilitation can be supported in either inpatient rehabilitation beds or in their own homes.

“Launching the ICSS means we can provide a home-first model of care for all stroke patients who can return home safely with appropriate support and rehabilitation through intensive, specialist therapy services in a home setting. This

approach will reduce the average length of stay in hospital, facilitating bed flow in Midland Met. Plus, it provides a seamless transition of care from acute to non-acute inpatient or domiciliary services with the same level of stroke multi-disciplinary team (MDT) expertise.

Speaking of the benefits of these service changes, Clair remarked: "Patients admitted to Midland Met will have access to diagnostics which will ensure they are diagnosed and treated swiftly in line with the latest national guidelines. Having this opportunity to make the stroke service operate in line with best practice will ultimately benefit patients and help us improve the patient experience from admission to rehabilitation.

"We've also had additional funding provisionally approved to recruit additional staff to ensure a diverse and skilled workforce working collaboratively between inpatient acute and rehabilitation services, plus community rehabilitation. Overall, we're making positive steps to change our services ahead of our move in 2024, and the team is taking advantage of every opportunity to seek feedback and patient input to help shape our services."



Members of the stroke services team

NHS England impressed with IPC

Midland Met is the talk of the town and our Infection Prevention and Control (IPC) team is leading the charge making sure our brand-new hospital gets a clean bill of health meeting all of the latest regulations ensuring it provides the best possible care for our patients.

Recently, we had some very important guests from the NHS England IPC team and the NHS Black Country Integrated Care Board visit us. Our Deputy Director of Infection Prevention and Control, David Shakespeare, showed them around and explained how we're making IPC measures a top priority at Midland Met.

David explained: "The visiting team were very impressed with the scale and scope of the works ongoing at Midland Met and were able to see the benefits of improved IPC provision for future patients. The site will have 50 per cent single occupancy rooms for patients, helping prevent the spread of infections.

"The visiting team also saw that some rooms will have specialist ventilation systems known as positive pressure ventilation lobby (PPVL) rooms. These rooms have a small area in which a positive pressure air cushion creates a barrier between the patient in the room and the corridor outside which are used for patients with infectious diseases and prevent the spread to others. These rooms also support immunosuppressed patients providing an added layer of protection preventing airborne diseases from getting into the room."

David added: "The visiting team also saw another example of our good infection prevention and control provision when visiting the neonatal unit where there is a dedicated decontamination room where incubators can be disassembled and thoroughly cleaned before going back into use again."



NHS England visited several areas to review infection prevention and control measures in place at Midland Met.



To find out more visit <https://www.swbh.nhs.uk>
or email swbh.comms@nhs.uk

'Hope' honours healthcare heroes

When Jacob Chandler's father was admitted to City Hospital during the pandemic, he had no idea what to expect. He was terrified that his father would not make it. But thanks to the amazing work of Dr. Leong Lee and the critical care team, his father survived. And Jacob knew he had to do something to say thank you.

As an acclaimed sculptor, Jacob knew just what to do. He decided to create a unique sculpture called 'Hope' to honour the healthcare heroes who saved his father's life. The sculpture will represent the hope of survivors receiving life-saving treatment and show gratitude to the incredible medics and clinicians who dedicated themselves to the cause.

Jacob's work is all about creating sculptures that inspire and uplift. He uses steel and bronze to create bold, striking images that capture the imagination. And for this project, he knew he had to go above and beyond to capture the true spirit of hope.

"The sculpture will be of a figure holding out her arm, referencing the image of the Lady with the Lamp, and with her head held high to face the fray," Jacob said. "It will be a symbol of the hope that the medics and clinicians have bravely provided throughout our battle with COVID-19."

For Jacob, this sculpture is personal. He knows what it's like to have a loved one in the hospital, fighting for their life. He knows the fear and uncertainty that comes with that. And he knows that hope is what gets you through.

"We all hope for the best when we enter a hospital, something I can relate to as my father was cared for at City Hospital," Jacob said. "Hope is what the medics have bravely provided throughout our battle with COVID-19. I hope that it goes some way towards making staff at Sandwell and West Birmingham NHS Trust feel valued. They often don't get to see the impact they have outside hospital walls, but it permeates society."

The sculpture will proudly stand outside the south entrance of Midland Met, serving as a beacon of hope to all who pass by. It's a tribute to the amazing work of the healthcare heroes who put their lives on the line to care for their patients, and a reminder that even in the darkest of times, there is always hope.

Johnny Shah, Head of Your Trust Charity, remarked: "We are honoured that Jacob has chosen to make such a heartfelt and personal tribute to our colleagues in recognition of the care they provided to patients throughout the pandemic, and, to his father. We'd like to thank Jacob, as well as our supporters, whose generous donations through our Midland Met fundraising campaign have made the production of this piece possible.

"Everyone at the Trust is thrilled to have Jacob on board. We know how much his work means to the community, and we're grateful for his support."

Jacob's work is a testament to the power of art and the importance of hope. It's a reminder that even in the toughest of times, we can find beauty and inspiration in the most unexpected of places. And it's a tribute to the amazing work of the healthcare heroes who have dedicated themselves to the care of others.

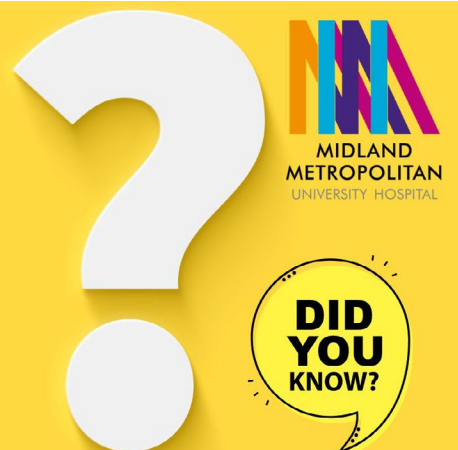


Jacob Chandler pictured with the sculpture he created for The Commonwealth Games.

The Winter Garden is more than just a place to meet.

It will not only be an inviting place for staff, patients and visitors to meet and relax, but it will also be the main welcome point housing a contemporary art gallery.

Visitors will be able to find their way around with the help of clear signs, volunteers and wayfinding from this location.



**MIDLAND
METROPOLITAN
UNIVERSITY HOSPITAL**

**DID
YOU
KNOW?**