



MIDLAND  
METROPOLITAN  
UNIVERSITY HOSPITAL



# Midland Met Monthly

**NHS**  
Sandwell and  
West Birmingham  
NHS Trust



MidlandMetUH



SWBHnhs



midlandmetuh

## Bringing you the latest updates on the Midland Met development and beyond

Issue 01 - February 2023

Welcome to the first edition of our regular newsletter for our partner organisations and other stakeholders. This bulletin is designed to keep you up to date with the latest news as we prepare to open the Midland Metropolitan University Hospital in Smethwick.

Good progress is being made on the site and we now have some floors nearing completion. We are expecting handover of the building at the end of this year and planning to open for patients in spring 2024.

As we draw nearer to opening, our teams are getting ready for the changes they need to make. We are aiming to make most of the service changes well ahead of moving.

Midland Met is a fantastic care facility for our communities, but it is much more than a hospital. In future editions of this newsletter we will share how the new hospital will act as a catalyst for improved health and outcomes for the Sandwell and West Birmingham populations.

Thank you for your support.

Rachel

Rachel Barlow, Senior Responsible Officer



Rachel Barlow

There will be separate routes for inpatients and visitors.

Inpatients will be transferred around the new hospital via separate corridors and lifts to those used by visitors. It will preserve patient privacy and dignity whilst moving around the hospital.



DID YOU KNOW?

## Clinical Care Model

**The new Midland Metropolitan University Hospital will become our main acute hospital site for patients in Sandwell and West Birmingham. It will house the emergency department, maternity delivery suites and neonatal care, inpatient medical wards and operating theatres and wards for planned and emergency surgery.**

It brings together the acute services for people who need emergency care that are currently provided at Sandwell General Hospital and City Hospital. These two sites remain when Midland Met opens, and patients will visit them for routine outpatient clinics and day case surgery. The Sandwell site will also have a 24/7 urgent treatment centre. City Hospital site also retains the Birmingham and Midland Eye Centre.

Many of the changes to services to get ready for Midland Met are taking place in the community, including the support we can provide for people in their homes to reduce the need for a hospital stay.



This is a benchmark room in our dedicated children's Emergency Department (ED) area. It has its own entrance and is a new feature within our Trust as we do not currently have a separate children's ED within our existing estate.

## Services for frail patients

**Lots of services are changing in preparation for the new hospital opening. A big change is the way we are caring for frail older patients. Here you can read about the patient experience once Midland Met opens.**

Mrs Jones, a 79-year-old frailty patient, is transferred to Midland Metropolitan University Hospital after a fall in her home.

On presentation to the emergency department, she is triaged as moderately frail and identified by the frailty intervention team. She is transferred to the frailty same day emergency care area for assessment.

The team carry out a comprehensive assessment and identify that Mrs Jones has deranged kidney function and requires fluids and a course of antibiotics. The therapists are able to facilitate Mrs Jones back to being safely mobile with her walking frame.

Following intervention and discussion with Mrs Jones, she is able to return home on the same day with the support of the integrated discharge hub for a new social care package and she is referred to the community therapy team for further rehabilitation in her own home.

Once home, Mrs Jones is supported by carers and her family. The following day she is reviewed

in the frailty virtual ward to ensure she continues to improve. With the support of a range of services working together, Mrs Jones recovers well and is back to doing her usual daily activities independently within one week.

This pathway ensures that Mrs Jones does not need an admission to hospital as she is assessed on the same day of arriving at the emergency department and then returns home with the right care in place. She experiences the benefits of being supported in her own home rather than losing independence in a hospital setting.



Emma Hibbs is a Trainee Advanced Clinical Practitioner who works in our growing frailty intervention team that care for our frail patients

## Improving stroke services

Our stroke services will change to better care for patients as we move towards opening our new hospital. We aim to provide first class care for patients in hospital who have experienced a stroke and then enable people to get home quickly with all the rehabilitation and therapy support that they need.

We propose to do this by separating stroke services in hospital and and rehabilitation care to ensure our services are fit for purpose when Midland Met opens. This process involves looking at the latest best practice and technologies and listening to our patients, their carers and the people who use our services to create further improvements.

A stroke reference group that includes survivors, carers and support organisations is helping us shape the right care pathways. You can share your views on stroke services by emailing [swbh.engagement@nhs.net](mailto:swbh.engagement@nhs.net) or by calling the team on 0121 507 2671.

A selection of community sessions will be taking place soon. Please keep a look out for further updates.

## Fundraising campaign

Our We Are Metropolitan campaign aims to raise £2m to fund enhanced areas within and outside Midland Met, over and above what NHS funds will pay for.

We are fundraising to create community spaces, including exciting arts and heritage programmes, a welcoming and healing environment, and innovative research and development.

To find out more about how you can run your own fundraising activities, please go to [www.swbh.nhs.uk/charity/fundraising/](http://www.swbh.nhs.uk/charity/fundraising/) or click [here](#) to access our free fundraising pack.

### Want to get involved?

Join our flagship zip wire fundraising event at Midland Met on 1 and 2 July 2023!

Do you have a head for heights or simply fancy a new challenge? Join our zip wire team and raise funds for our We Are Metropolitan campaign. On the weekend of the 1 and 2 July, brave fundraisers will be speeding down our dedicated zip wire from the top of the building to the bottom. Email [trustcharity@nhs.net](mailto:trustcharity@nhs.net) to register. The fundraising target is £250.

[swbh.nhs.uk/charity](http://swbh.nhs.uk/charity)


making everyone matter



Join our crane  
**ZIP WIRE  
CHALLENGE**  
and raise money for  
Your Trust Charity's We Are  
Metropolitan campaign.

**1 and 2 July 2023**



Email [trustcharity@nhs.net](mailto:trustcharity@nhs.net) to register.  
Fundraising target - £250

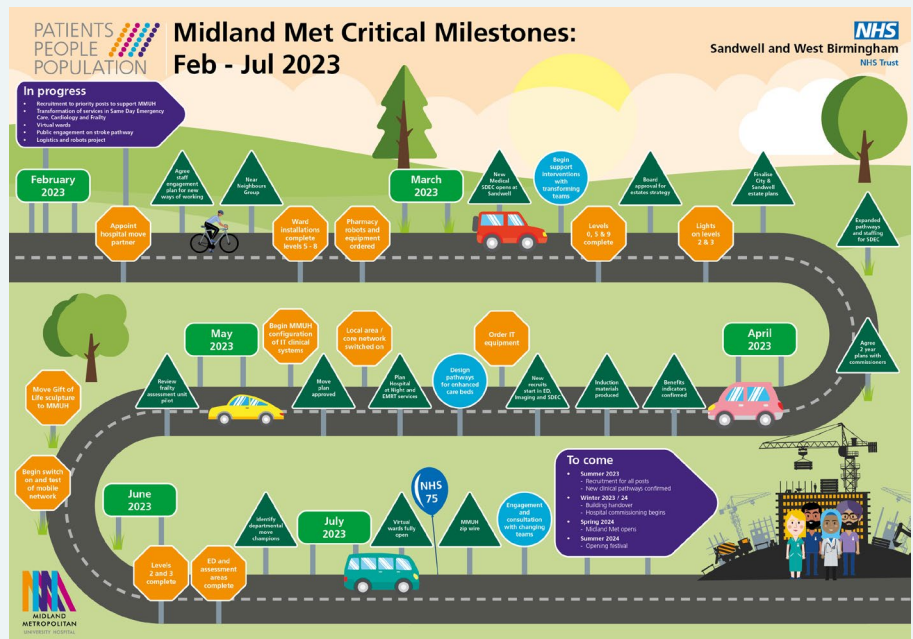
#MoreThanAHospital



# Critical milestones roadmap: February - July 2023

A lot is going on behind the scenes at Midland Met as we get ready for its opening in 2024.

Our roadmap sets out key milestones for the project for the next six months.



## Near Neighbours Group



If you are a local resident, business, community, voluntary or faith-based organisation within one mile of our new hospital you might be interested in joining our Near Neighbours Group.

We'd love to welcome you to one of our sessions at the following times and dates:

- Wednesday, 22 February, 18:30 – 20:00 Assembly Hall, George Dixon Academy, Portland Road, Birmingham B16 9GD.
- Monday, 27 February, 10:30 – 12:00 CAP Centre, Windmill Lane, Smethwick, B66 3LX.
- Friday, 3 March, 14:00 – 15:30 – Online.

To register for one of the sessions, please call 0121 507 2671 or email [swbh.engagement@nhs.net](mailto:swbh.engagement@nhs.net)



To find out more visit <https://www.swbh.nhs.uk> or email [swbh.comms@nhs.net](mailto:swbh.comms@nhs.net)