

## Emergency Care Performance

ED 4 hour performance is showing sustained performance on all measures. This is mainly related to the volumes coming through the door in relation to the Covid lockdown. The SPC chart indicators show June performance at 89.97% a decline of 1.61% compared to June, but with an increase of 19.5% in admission compared to the previous month. Whilst volume of activity has decreased compared to last year, ED has to operate through two streams, with 80% of total volume coming through the Cold stream. With the configuration of the ED split, there is reduced cubicle capacity to review throughput of activity coming through in the cold stream.

### **1. Improvement in 30 mins initial assessment**

SGH has declined its time to initial assessment in June with 89.6% on average of patients being seen within 30 mins compared to May (92.5%). This can be attributed to increase in activity at SGH with some days back at pre-Covid numbers.

City has also maintained its time to initial assessment in June at 96.3% on average of patients being seen within 30 mins. This can be attributed to the senior triage and decision making places in ED placing patients in the correct stream, and overall volumes being low compared to pre Covid.

### **2. Improvement in seeing patients within 60 mins from arrival**

Both sites have seen a decline in patients being seen within 60 mins from arrival from April to May. City in June averaged 77.7% decline of 5.2% compared to May. SGH in June averaged 69.3% and in May 72.5% - decline of 3.2%. This can also be attributed to both departments seeing a shift in total activity (especially for SGH) but mainly the shift from Hot to Cold streams and the impact on cubicle availability and total occupancy leading to delays.

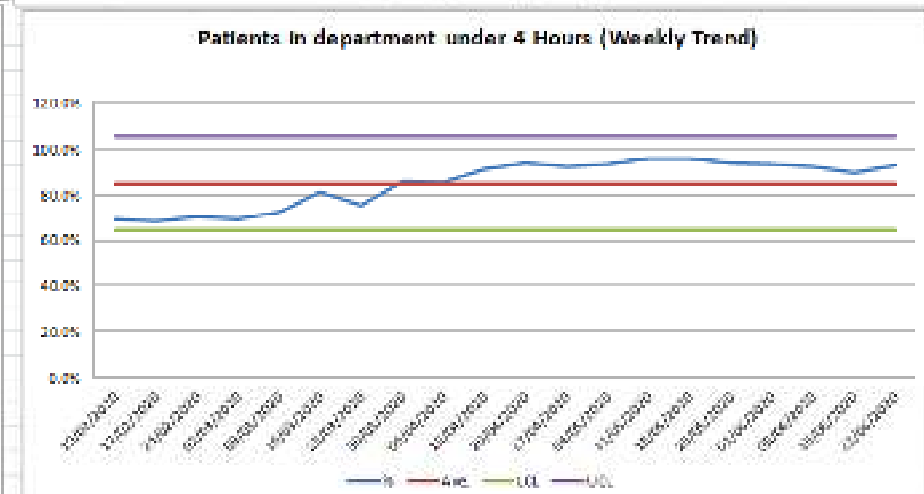
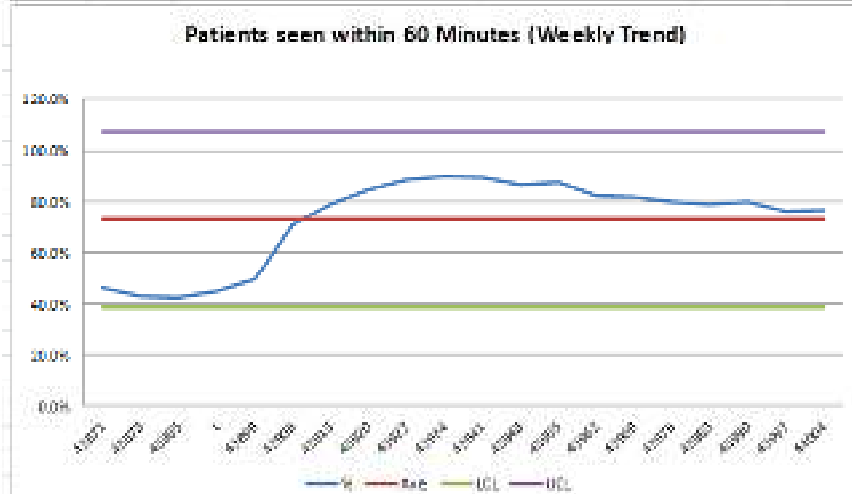
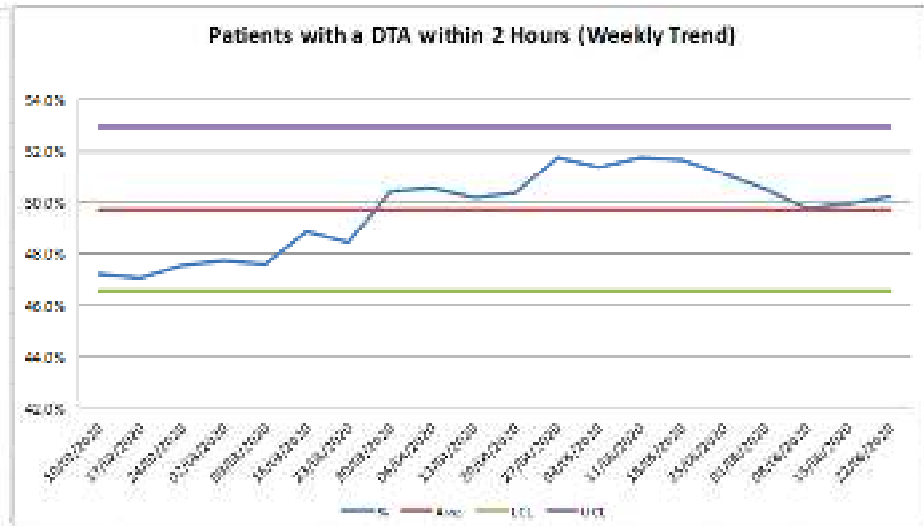
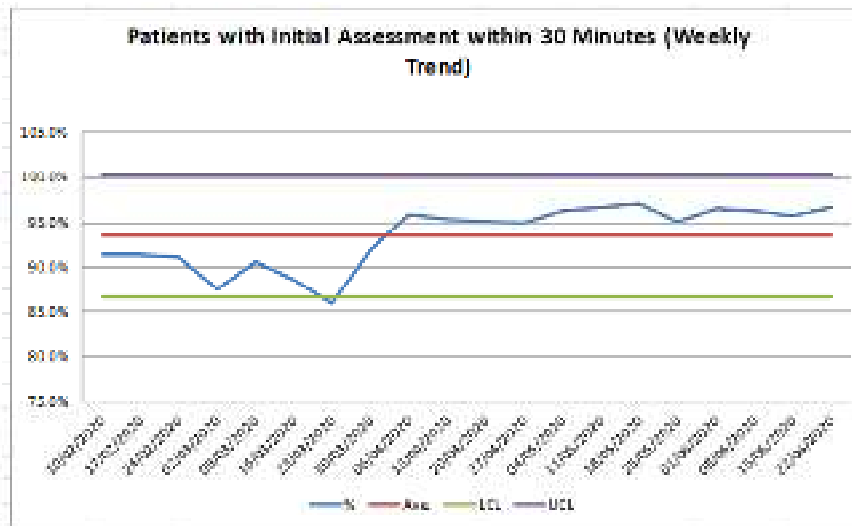
### **3. Patients with a DTA within 2 hours from arrival**

City has declined its performance in ensuring all patients have a DTA within 2 hours from arrival, in June the average was 50.1% a decrease of 1.4% compared to the previous month, and at SGH a decline of 1.3% from May to June with June averaging at 50.4%.

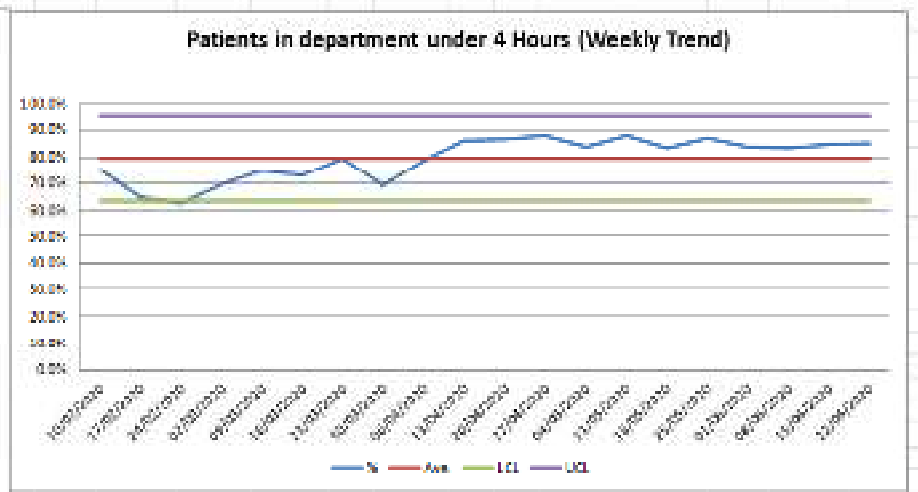
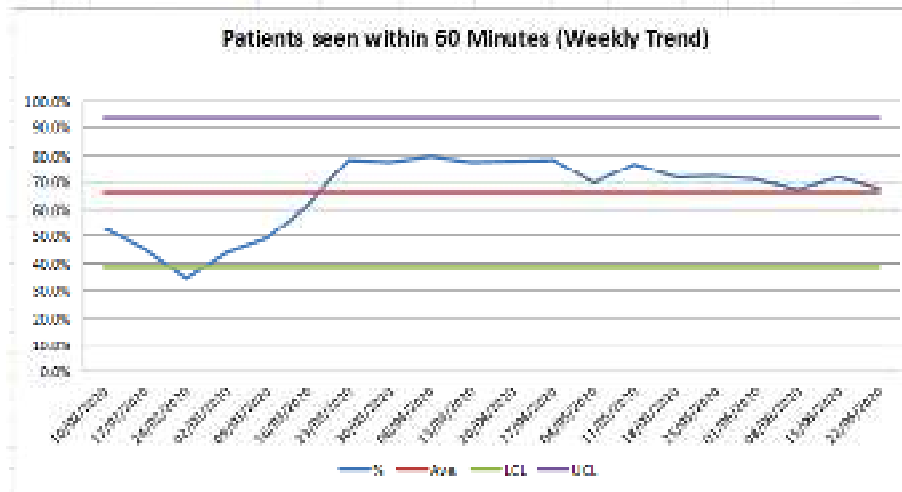
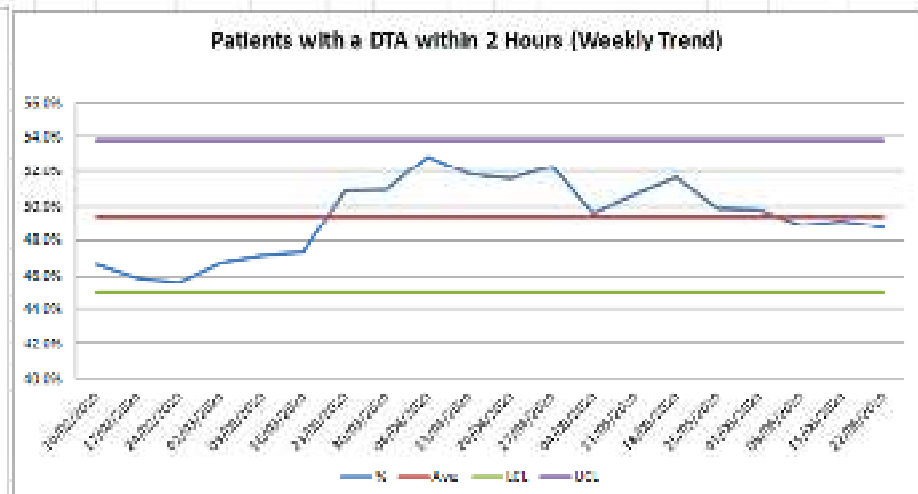
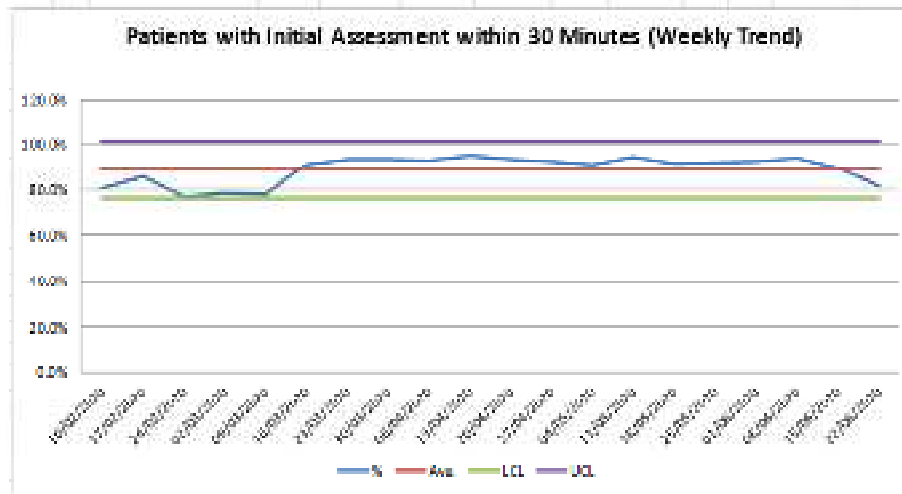
ED's have divided their departments into Hot and Cold areas as a response to Covid-19 through a number of phases. In order to assess the right area a patient is to be treated in, triage points at the front door and in RAM have been set up. There have also been a number of operational changes to Paediatric and Minors streams and bringing this activity back into ED to support the Trusts recovery programme.

Streaming to GP, ambulatory care and scheduled urgent OP will divert out of hours ED activity.

City daily SPC charts



Sandwell daily SPC charts



Liam Kennedy, Chief Operating Officer