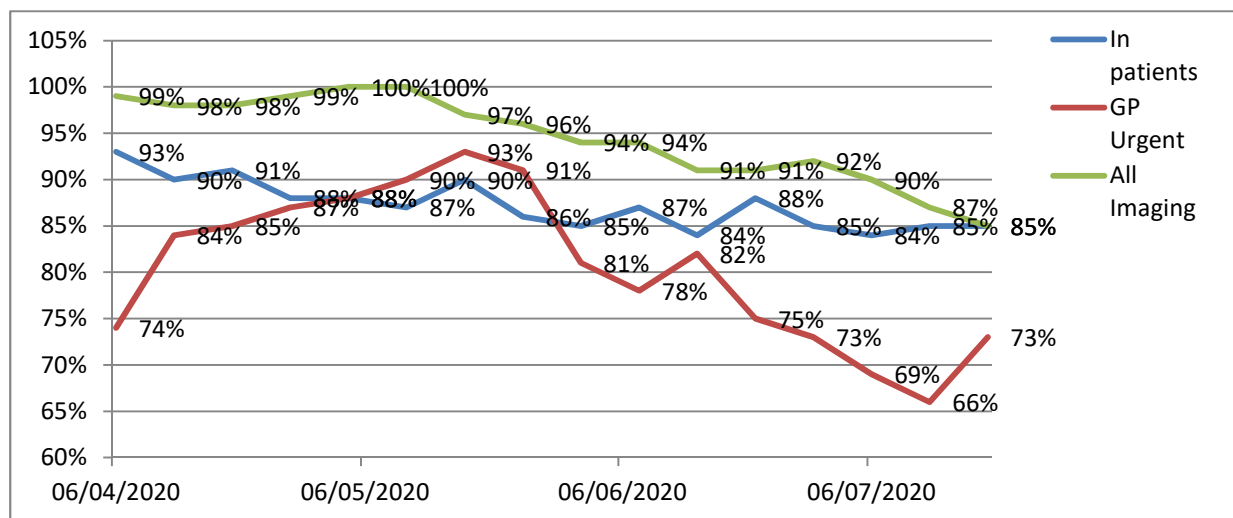


Trust Board Update re Imaging Performance

31/07/2020

From the start of April 2020, Imaging performance has been as follows:

	In patients (Target 90%)	GP Urgent (Target 90%)	All other Imaging (Target 95%)
06/04/2020	93%	74%	99%
13/04/2020	90%	84%	98%
20/04/2020	91%	85%	98%
27/04/2020	88%	87%	99%
04/05/2020	88%	88%	100%
11/05/2020	87%	90%	100%
18/05/2020	90%	93%	97%
25/05/2020	86%	91%	96%
01/06/2020	85%	81%	94%
08/06/2020	87%	78%	94%
15/06/2020	87%	78%	94%
22/06/2020	84%	82%	91%
29/06/2020	88%	75%	91%
06/07/2020	85%	73%	92%
13/07/2020	84%	69%	90%
20/07/2020	85%	66%	87%



The impact of Covid19 and the subsequent recovery process is reflected in the dip in KPI performance.

The decline demonstrated with the GP urgent and all Imaging KPI is a direct result of patients refusing to attend for appointments and/or refusing to engage in the whole process. In addition the additional workload experienced by the booking teams in dealing with anxious patients and the pre-screening process is proving challenging.

During the entire Covid19 pandemic, no patient has been removed from any Imaging waiting list and therefore waiting times have naturally extended. A Trust wide solution to patient refusals and non-engagement is currently under discussion which will assist an improved performance.

Focus on the IP KPI remains a high priority for the team. The Group has now assigned ownership of the targets to individual modality leads to address the shortfall.

The following table demonstrates a daily snapshot of performance for 27/07/20. This shows the successes across the majority of modalities. Our main focus remains on US and MRI.

	No	Yes	Total	% Yes
CT	1	55	56	98%
Monday		36	36	100%
Tuesday	1	19	20	95%
Fluoroscopy	1	17	18	94%
Monday		10	10	100%
Tuesday	1	7	8	88%
MRI	4	9	13	69%
Monday		4	4	100%
Tuesday	4	5	9	56%
Radiology		20	20	100%
Monday		12	12	100%
Tuesday		8	8	100%
Ultrasound	21	33	54	61%
Monday	15	19	34	56%
Tuesday	6	14	20	70%
Obstetrics	3	51	54	94%
Monday	1	33	34	97%
Tuesday	2	18	20	90%
Nuclear Medicine		1	1	100%
Tuesday		1	1	100%
Total	30	186	216	86%