

Psychological Scorecard

Stress Risk Assessment (SRA) completion numbers by Group

Updated 21/07/2020

Group	Total
Corporate	17
Imaging	2
Medicine & Emergency Care	54
Primary Care, Community and Therapies	13
Surgical Services	79
Women & Child Health	37
Grand Total	202

Psychological Scorecard Wellbeing Sanctuary Feedback



Employees are asked to complete an initial and post assessment to indicate how they would rate their feelings and thoughts before and after their experience at the Sanctuary.

Employees tick one of the five options (*None of the time, rarely, Some of the time, Often, All of the time*) for each of the statements listed below:

- I've been feeling optimistic about the future
- I've been feeling useful
- I've been feeling relaxed
- I've been dealing with problems well
- I've been thinking clearly
- I've been feeling close to other people
- I've been able to tickle up my own mind with useful things

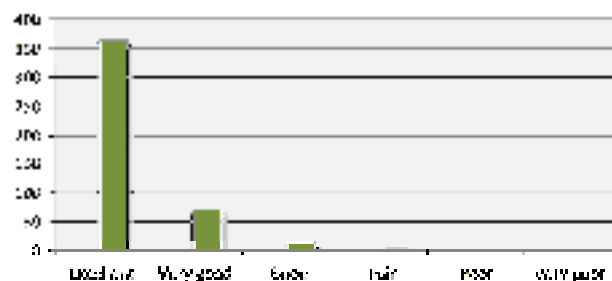
From this a pre and post experience score is generated

Number		%
352	Number of employees with improved post experience score	78.22%
90	Number of employees with unchanged post experience score	20.00%
8	Number of employees with a lower post experience score	1.78%

Note: The 8 employees with a lower post experience still rated the support they received at the Wellbeing Sanctuary as either *Excellent, Very Good, Good*.

How would you rate the support you received at the Wellbeing Sanctuary?

	Number	%
Excellent	343	83.03%
Very Good	40	10.03%
Good	13	2.90%
Fair	7	0.17%
Poor	0	0.00%
Very poor	0	0.00%
Total	413	



Wellbeing Sanctuary Feedback comments

The wellbeing Sanctuary is fantastic. It's allowed me to take some time out for myself and unwind from daily life. The staff are brilliant and extremely welcoming and take time to listen to you.

As always excellent. Staff go above and beyond each time to address all areas of health and wellbeing. Thank you.

Brilliant, please can it stay forever!!! THANK YOU!!!

Really good idea, really friendly staff, thank you so much

Staff are always so friendly and welcoming, it's such a calm and relaxing environment. Each time I come away has been amazing and helped me in many ways. I can only ever say Thank You.

Blow me away with the support and kindness of these ladies. Thank you, can not wait to return for a massage.

This reminded me to look after myself. Just when I needed reminding. Leaving feeling valued.

Thank you so much for such a welcoming experience. It has really helped to have such a service, with such calming, understanding and friendly people at such a difficult time. Truly a Goddess.

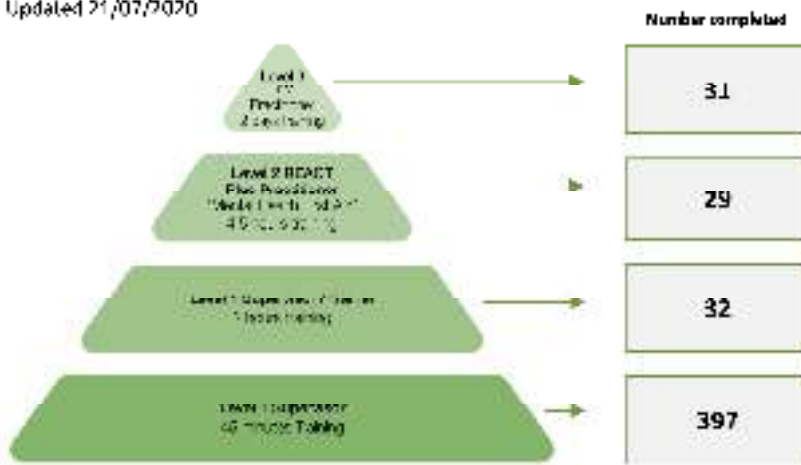
Really appreciate the techniques offered and will definitely apply them in my work/life.

Psychological Scorecard

Mental Wellbeing Training



Updated 21/07/2020



Psychological Scorecard

Mental Wellbeing Training by Group

Updated 21/07/2020

Group	Total	Total Acc Mgr	Total	Total Acc Mgr	Total	Total Acc Mgr	Total	Total Acc Mgr
	Level 1 Training	Level 1 Training	Level 1 Supervisor	Level 1 Supervisor	Level 2 REACT	Level 2 REACT	Level 3 TriM	Level 3 TriM
Corporate	139	60	31	21	3	1	13	4
Imaging	12	7	0	0	0	0	0	0
Medicine & Emergency Care	60	18	0	0	8	3	10	4
Primary Care, Community and Therapies	98	48	0	0	5	0	2	0
Surgical Services	49	22	0	0	8	4	6	2
Women & Child Health	39	17	1	0	5	2	0	0
Grand Total	397	172	32	21	29	10	31	10

Psychological Scorecard

Mental Wellbeing Training by Directorate

Updated 21/07/2020

Group	Total	Total Acc Mgr	Total	Total Acc Mgr	Total	Total Acc Mgr	Total	Total Acc Mgr
	Level 1 Training	Level 1 Training	Level 1 Supervisor	Level 1 Supervisor	Level 2 REACT	Level 2 REACT	Level 3 TriM	Level 3 TriM
Corporate	139	60	31	21	3	1	13	4
Corporate Nursing Services	9	4	0	0	0	0	0	0
Finance	10	10	0	0	0	0	0	0
Medical Directors Office	23	12	0	0	0	0	0	0
Operations	23	10	0	0	3	1	2	0
People & Organisation Development	50	10	31	21	0	0	11	4
Strategy & Governance	8	5	0	0	0	0	0	0
System Transformation	16	9	0	0	0	0	0	0
Imaging	12	7	0	0	0	0	0	0
Black Country Pathology	0	0	0	0	0	0	0	0
Breast Screening	4	4	0	0	0	0	0	0
Diagnostic Radiology	5	1	0	0	0	0	0	0
Interventional Radiology	0	0	0	0	0	0	0	0
Nuclear Medicine	3	2	0	0	0	0	0	0
Medicine & Emergency Care	60	18	0	0	8	3	10	4
Admitted Care A	20	7	0	0	1	1	1	1
Admitted Care B	17	9	0	0	0	0	0	0
Emergency Care	23	2	0	0	7	2	9	3
Primary Care, Community and Therapies	98	48	0	0	5	0	2	0
Ambulatory Therapies	14	5	0	0	2	0	2	0
Community Medicine	13	9	0	0	0	0	0	0
iBeds	27	13	0	0	0	0	0	0
iCares	42	21	0	0	3	0	0	0
Your Health Partnership	2	0	0	0	0	0	0	0
Surgical Services	49	22	0	0	8	4	6	2
Anaesthetics, Pain Mgt and Critical Care	19	3	0	0	3	2	3	2
General Surgery	9	7	0	0	0	0	1	0
Ophthalmology	6	5	0	0	0	0	0	0
Specialist Surgery	3	2	0	0	1	0	1	0
Theatres	12	5	0	0	4	2	1	0
Women & Child Health	39	17	1	0	5	2	0	0
Acute & Community Paediatrics	25	10	1	0	5	2	0	0
Gynaecology, Gynae-Oncology	11	6	0	0	0	0	0	0
Maternity & Perinatal Medicine	3	1	0	0	0	0	0	0
Grand Total	397	172	32	21	29	10	31	10