

Candidate Briefing Pack

We'll bring your **ambition** to life





And we'll help you achieve yours



**Sandwell and
West Birmingham**
NHS Trust

About us

At Sandwell and West Birmingham NHS Trust everyone matters, and our patients matter most. As one of the largest provider organisations in the NHS, with an annual income of over £500 million, we employ over 7,000 colleagues. The Trust provides community and acute services to nearly 700,000 people in an urban centre that demands massive regeneration and has substantial premature mortality.

We do many things well; the Trust has won awards for staff engagement, has strong staff-side partnerships, and is developing a consistent model of triumvirate multi-professional leadership across six clinical groups. The Trust is an education provider of note and is looking to grow further our research portfolio on a multi-national basis.

Our organisation

We provide services from two main acute sites: the City Hospital on Birmingham's Dudley Road site and from Sandwell General Hospital in West Bromwich, and from our intermediate care hubs at Rowley Regis and at Leasowes in Smethwick. The Trust includes the Birmingham and Midland Eye Centre (BMEC a supra-regional eye hospital), the regional specialist centre for Sickle Cell and Thalassaemia Centre, and the regional base for the National Poisons Information Service, all based at City. The Trust has three Emergency Departments, at City Hospital, Sandwell General and an eye ED at BMEC.



Our vision is set out in our 2020 strategy. To find out more please click on the image.

We have developed a set of **care** promises to reflect how we expect our staff to treat patients, visitors and each other.

The promises were developed by frontline staff who felt that even if we were providing excellent clinical care, we also need to provide great customer care, and that we were not always doing that in every area all the time.

Our promises to you...

1. **I will...** make you feel welcome
2. **I will...** make time to listen to you
3. **I will...** be polite, courteous and respectful
4. **I will...** keep you informed and explain what is happening
5. **I will...** admit to mistakes and do all I can to put them right
6. **I will...** value your point of view
7. **I will...** be caring and kind
8. **I will...** keep you involved
9. **I will...** go the extra mile

You help us with our ambition



**Sandwell and
West Birmingham**
NHS Trust

Investing in the future

Serving a community of nearly 700,000 people, our ambition to be renowned as the best integrated care organisation in the UK is an ambitious one. We have recently acquired four GP practices and have one of the largest UK sub contracted community portfolios. Through place based redesign, we will concentrate on the first and last 1000 days of life over the next few years. We are forming governance structures to oversee this with an independent Chair already appointed.

Our public health ambitions and long term provider to provider arrangements with some significant primary care businesses give us the opportunity to redesign care pathways in both planned and urgent care this year.

We have recently deployed a new electronic patient record, which will modernise health care within the organisation and have an ambitious digital road map over the next 18 months that will put us as leaders in digital healthcare delivery.



To be the best
integrated care provider

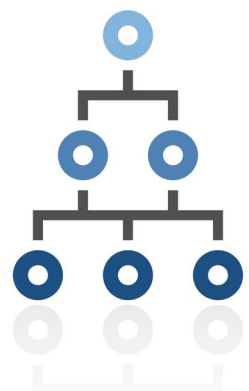


**Sandwell and
West Birmingham**
NHS Trust

Organisation Structure

The Trust Board comprises seven Non-Executive Directors and seven Executive Directors, including the Chief Executive Officer, five of whom are voting directors.

Richard Samuda	Chairman
Toby Lewis	Chief Executive
Liam Kennedy	Chief Operating Officer
Dr David Carruthers	Medical Director
Vacant	Chief Nurse
Dinah Mclannahan	Chief Finance Officer
Kam Dhami	Director of Governance
Raffaella Goodby	Director of People and Organisation Development



Organisation Structure *Click on the image to view the organisation structure*

In addition to our Board, four further directors form part of the Chief Executive's leadership group:

Martin Sadler; Chief Informatics Officer

Ruth Wilkin; Director of Communications

Rachel Barlow; Director of System Transformation

David Baker; Director of Partnerships and Innovation

The Trust delivers its services through six Clinical Groups:

- Primary Care, Community and Therapies
- Medicine and Emergency Care
- Pathology
- Women's and Child Health
- Surgical services
- Imaging

Sandwell and West Birmingham are embarking on huge and exciting changes. Overleaf are some useful links that you may be interested in that detail those changes.

You help us with our ambition



**Sandwell and
West Birmingham**
NHS Trust

Key Plans

Our 2020 Vision

Key plans

Research &
Development plan

Public Health plan

Education Plan

Quality
Plan

'Safety
Plan'

Enabling plans

Long term
financial plan

People
plan

Estates strategy

Digital plan

The new Midland Metropolitan University Hospital



Our year 2018/19



The story of our Trust

You can find out what makes us tick by looking at our website www.swbh.nhs.uk and our social media channels (opposite) where you will see some of the following content:

What do our staff say about working at the Trust

Our NHS Heroes

About us

The Star Awards

Social media



SWBHnhs1



SWBHnhs



SWBHnhs



SWBHnhs

#SWBHstory
#SWBHfamily