

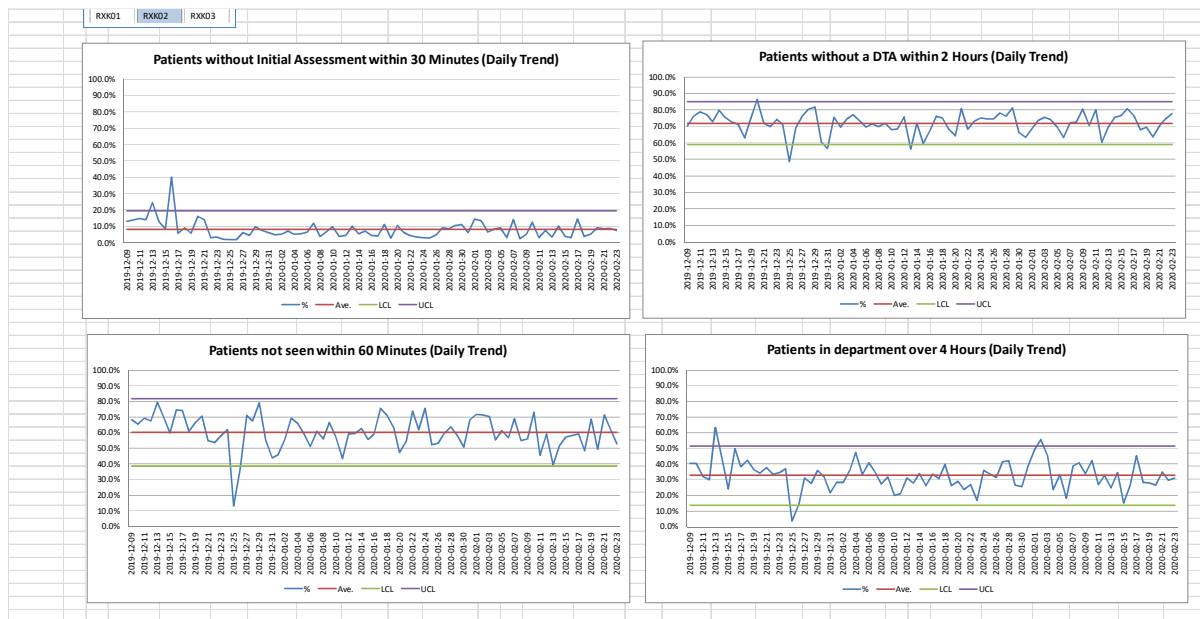
## ED performance

ED performance 4 hour performance is showing small weekly improvement aligned with the trajectory presented to the last Trust Board. The SPC chart indicators show little improvement again this month. The 1 hour to be seen indicator will be managed against those patients in the ED at 1 hour from arrival and those in the waiting room v triage category to stratify improvement effort. Consultant weekly level performance will be used in March to recognise individual improvement and supportive development needs.

Consultant interviews scheduled in early April will enable strengthened shift leadership skills.

Streaming to GP, ambulatory care and scheduled urgent OP will divert out of hours ED activity.

## City daily SPC charts



## Sandwell daily SPC charts

