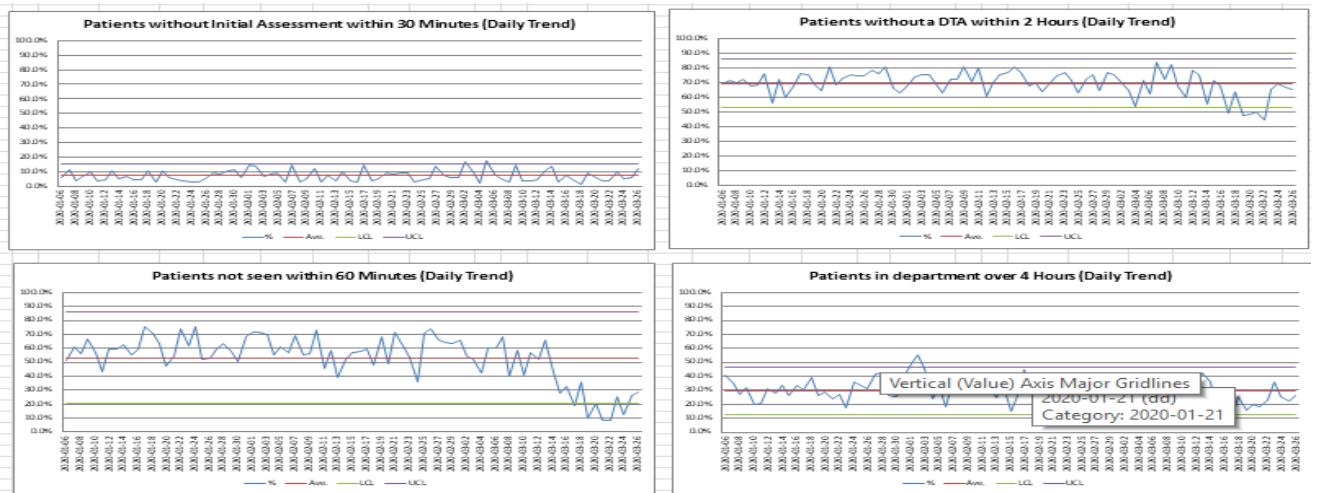


## ED performance

ED 4 hour performance is showing significant improvement on all measures with the exception of initial assessment within 30 minutes at city. This is mainly related to the volumes coming through the door in relation to the Covid lockdown. The SPC chart indicators show small improvements in February (74.59%) with larger improvements at the beginning of March (80.2%) pre covid, which have continued post Covid lockdown (79.19%). The 1 hour to be seen indicator will be managed against those patients in the ED at 1 hour from arrival and those in the waiting room triage category to stratify improvement effort. Consultant weekly level performance is being used in March to recognise individual improvement and supportive development needs.

Consultant interviews scheduled in early April will enable strengthened shift leadership skills. Streaming to GP, ambulatory care and scheduled urgent OP will divert out of hours ED activity.

### City daily SPC charts



### Sandwell daily SPC charts

