

Welcome



Welcome

Welcome to our special drop-in event for people to find out more about our planned developments for the Sandwell Hospital site, including improvements to parking facilities and the building of a new 400 space multi-storey car park.

The Trust is developing the Sandwell site as part of the move of some services to the Midland Metropolitan Hospital which is due to open in Smethwick in 2022. We are building a GP practice and pharmacy on the Sandwell site, re-opening the accommodation blocks at Hallam Court and have long term plans to develop the Hallam Hospital site.

Car parking for staff, patients and visitors is under pressure and as a result we have plans to improve parking to ensure we can continue to provide high standards of care to our patients.

Proposals for a new multi-storey car park are being developed by the Trust in conjunction with its estates development partner Prime and its car parking operator, Q-Park.



Delivering the project



About the Trust

Sandwell and West Birmingham NHS Trust is an integrated care organisation: we provide acute and specialist hospital services from City Hospital in Birmingham, Sandwell General Hospital in West Bromwich and Rowley Regis Hospital. We provide comprehensive community services to over 300,000 people in the Sandwell area from more than 150 locations. We run two GP practices at three sites in Birmingham and Sandwell.

We are dedicated to improving the lives of local people, to maintaining an outstanding reputation for teaching and education and to embedding innovation and research.

The Trust employs over 6,500 people and spends over £430m of public money, caring for over 530,000 local people from across West Birmingham and all towns within Sandwell.

P R I M E

About Prime

Prime enables health and care providers to make the most of their spaces so all of us can experience better care. We unlock complex estate management challenges with leading industry-specific legal, financial and property planning solutions, and work with your partners to see the projects through development to delivery.



About Q-Park

The Trust is working with Q-Park to manage parking across its portfolio.

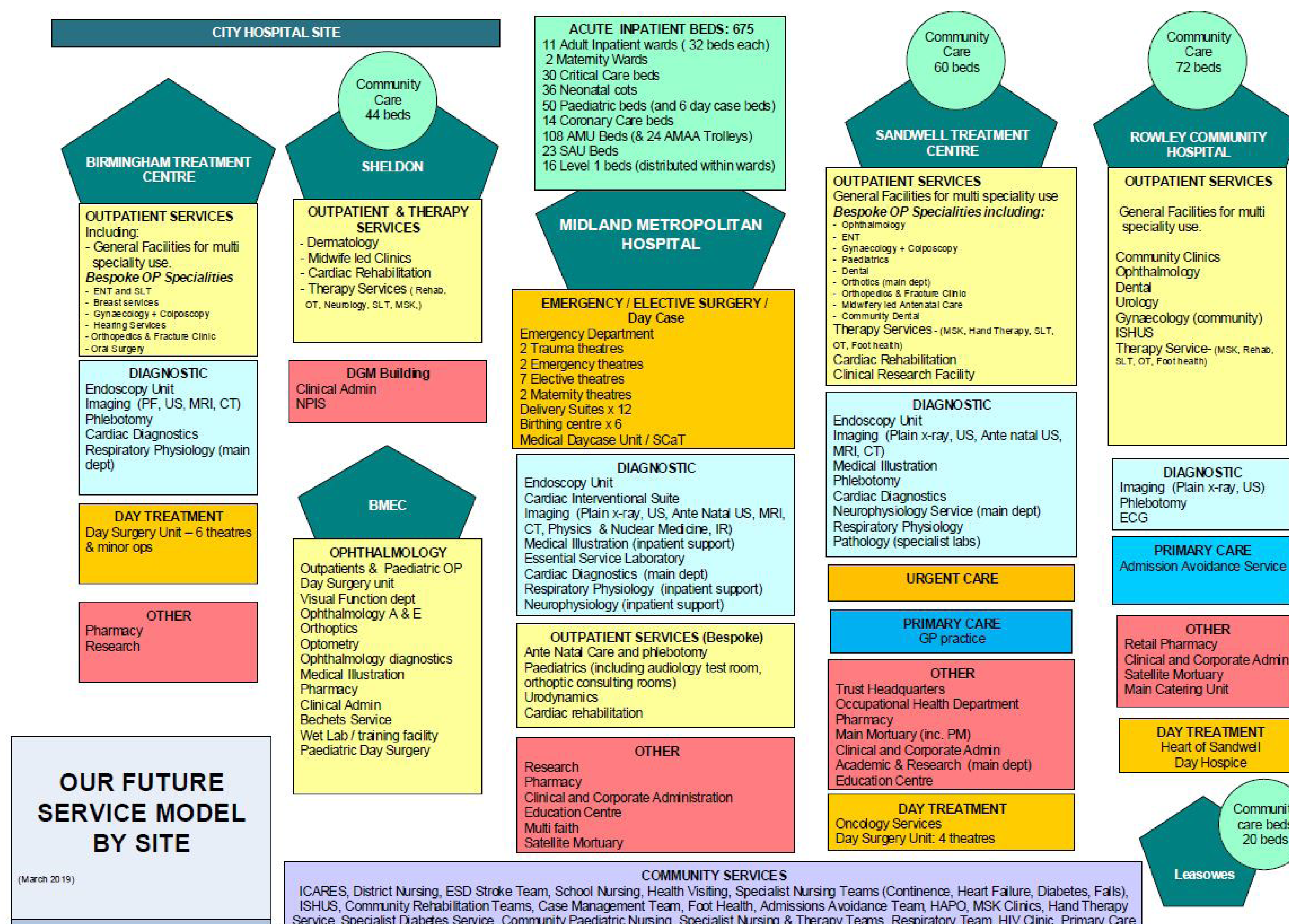
Q-Park is a well-respected car park operator with extensive experience within the UK and across Europe, and a reputation for high quality, secure and well managed car parks. In total Q-Park controls 800,000 parking spaces on more than 3,500 locations.

P R I M E

Services provided



The diagram shows which services will be provided on each of the Trust's sites following the opening of the Midland Metropolitan Hospital



Master plan



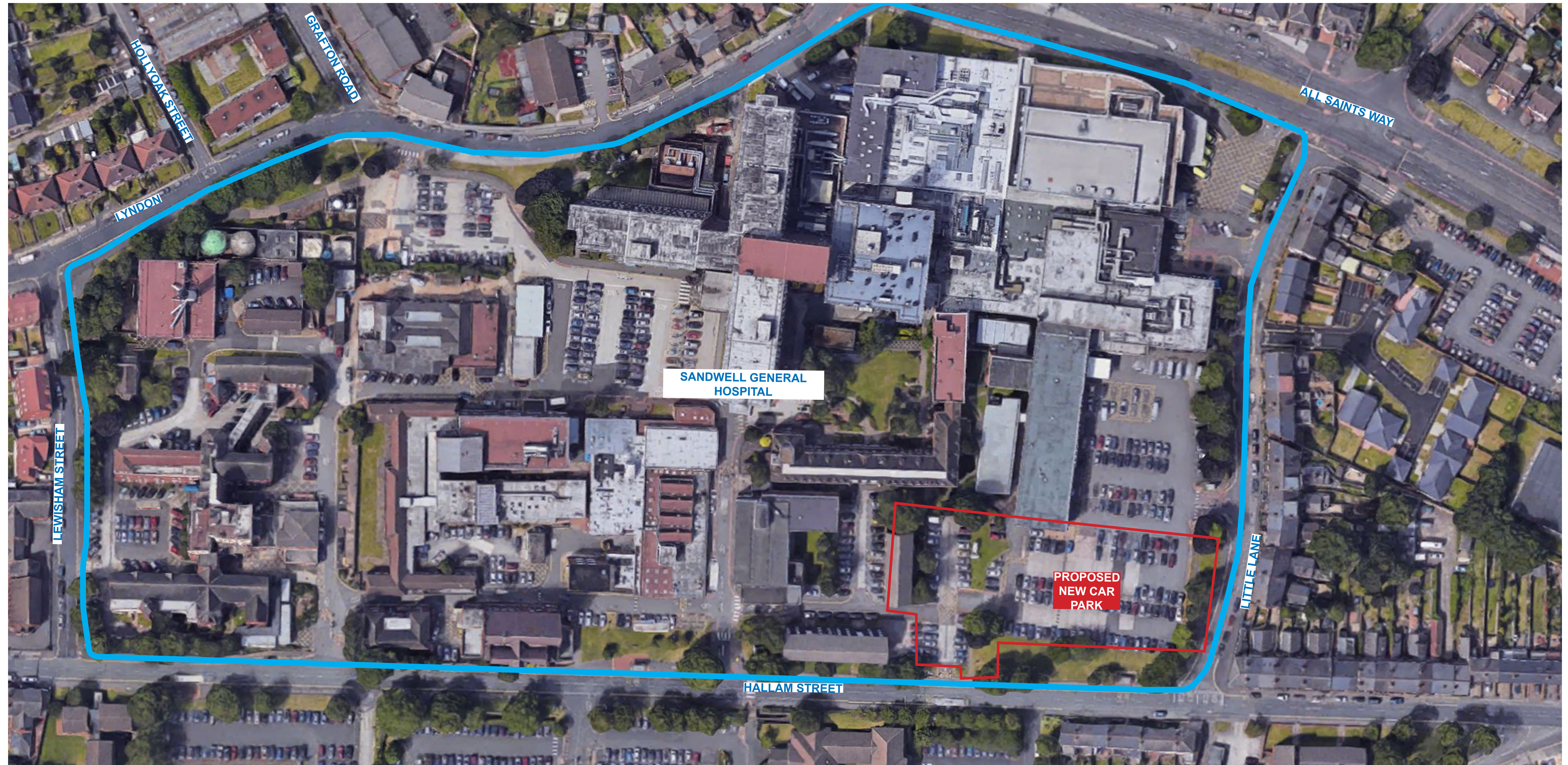
Sandwell and
West Birmingham
NHS Trust



Location



Sandwell and
West Birmingham
NHS Trust

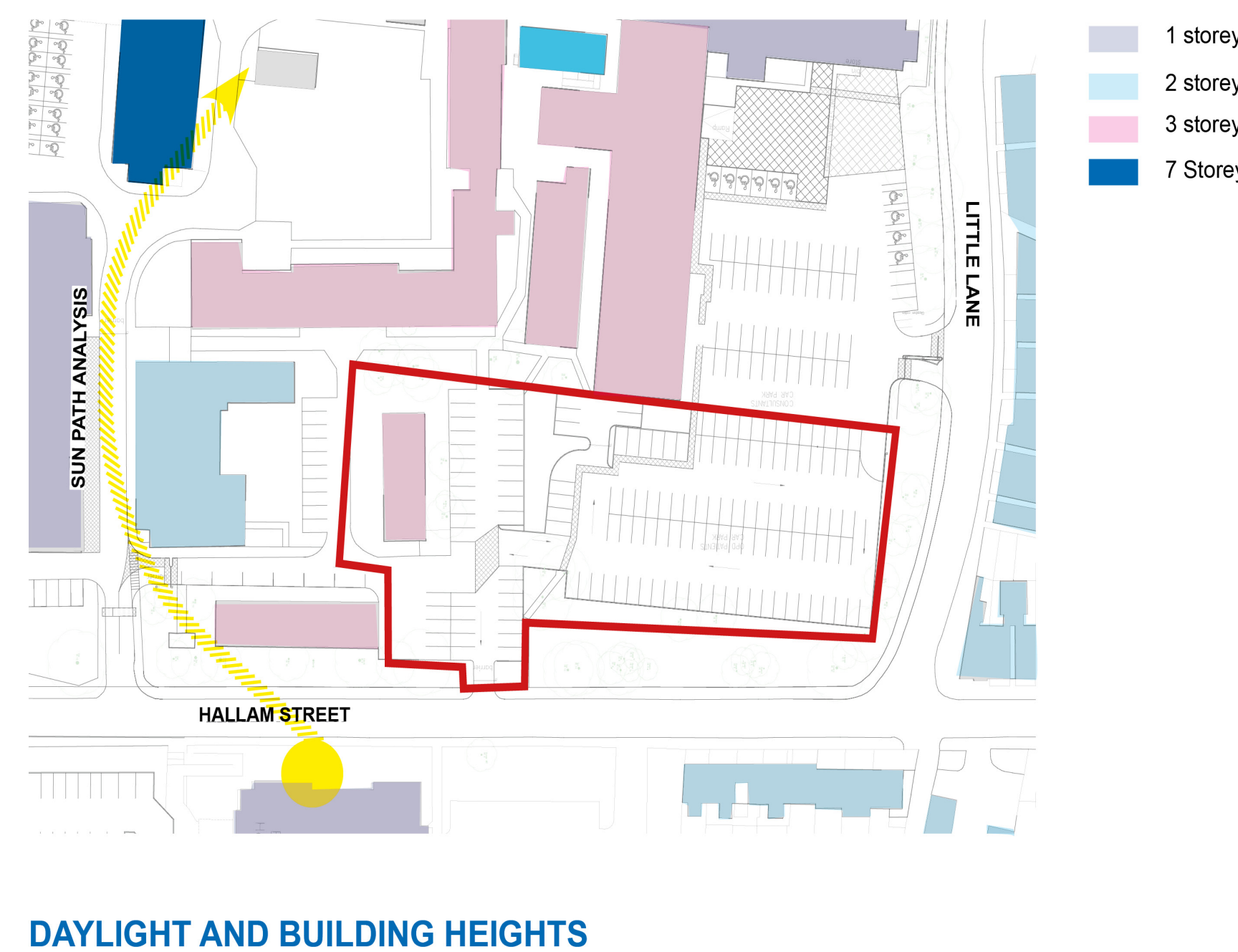
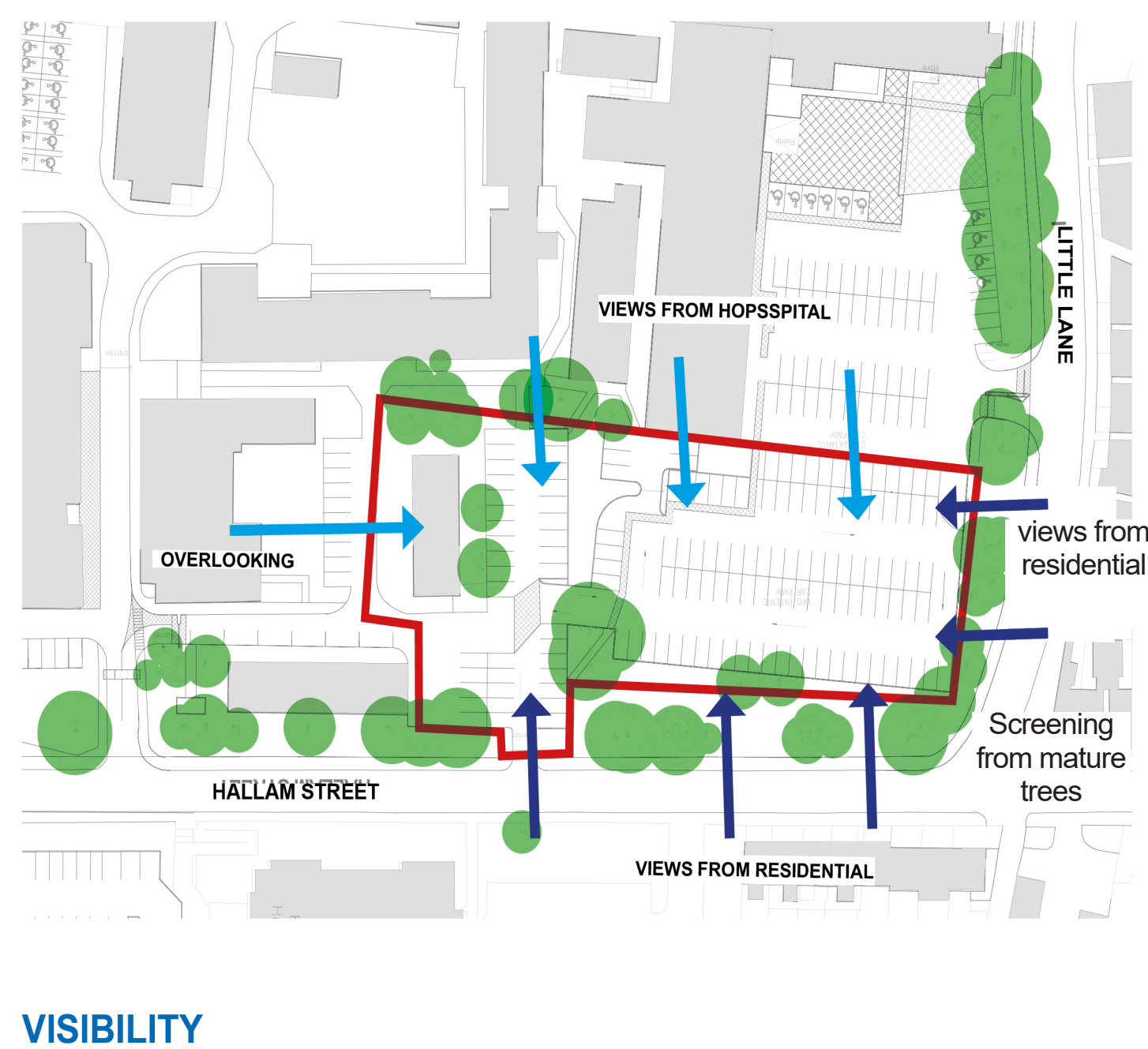
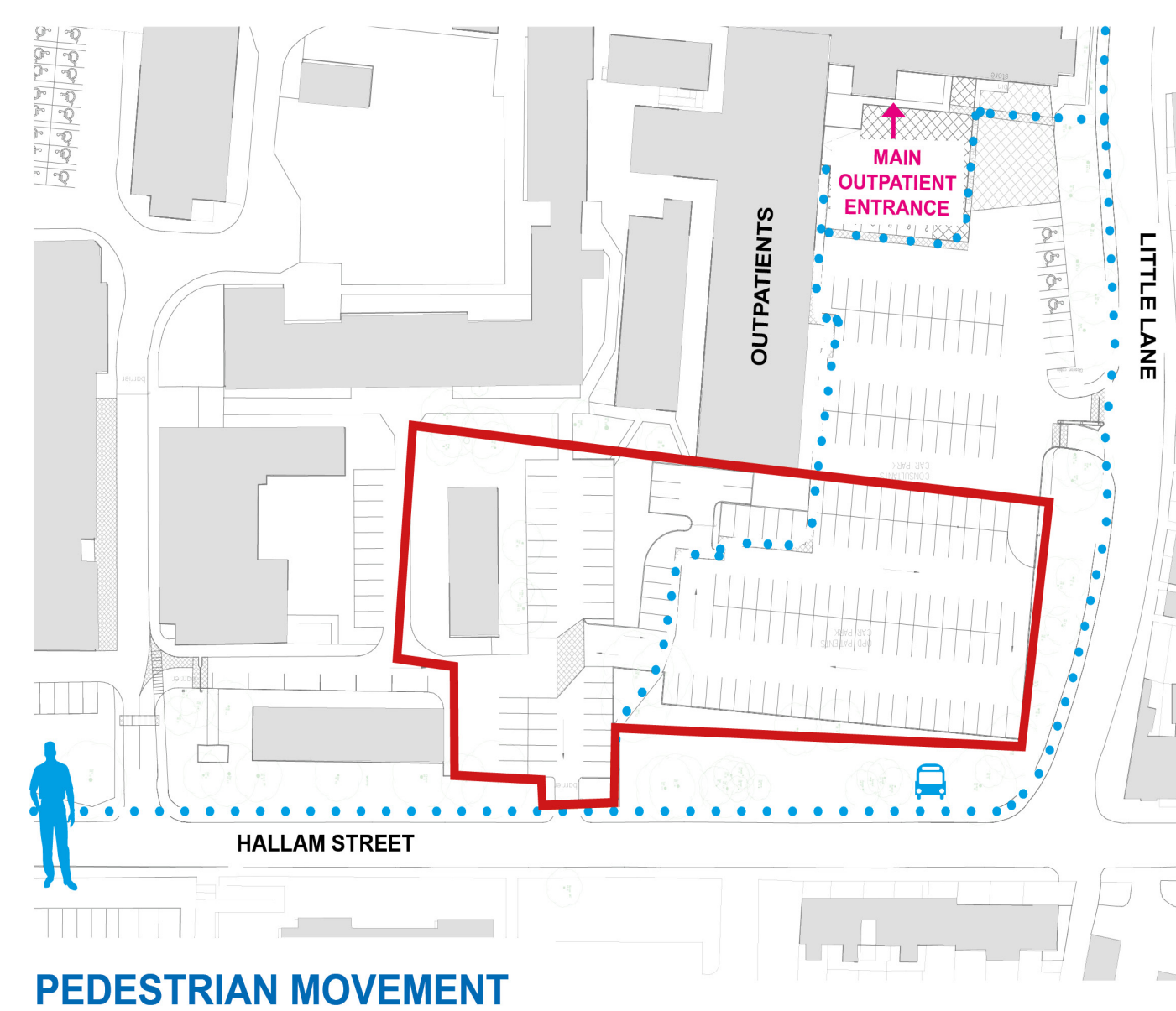
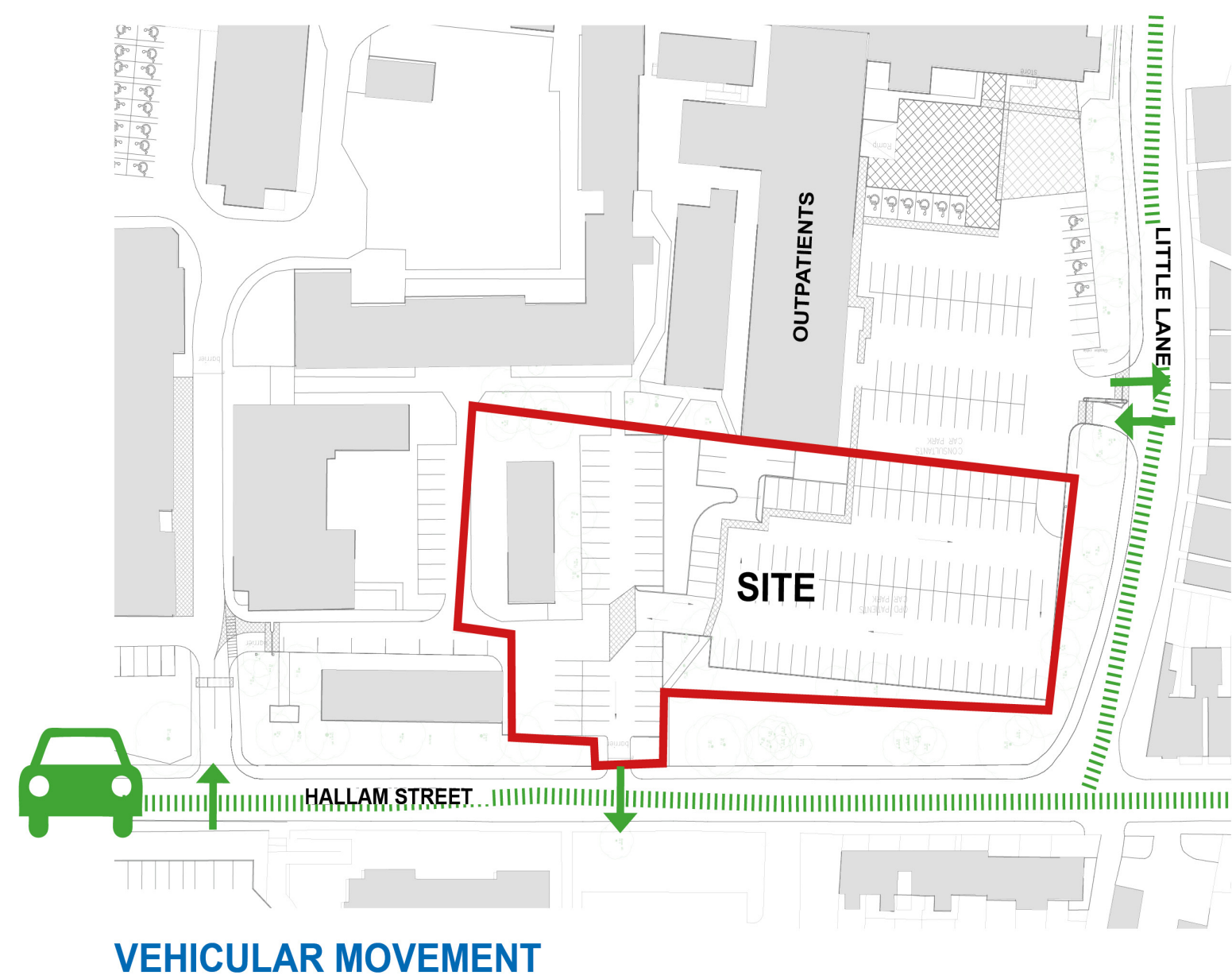


Site analysis

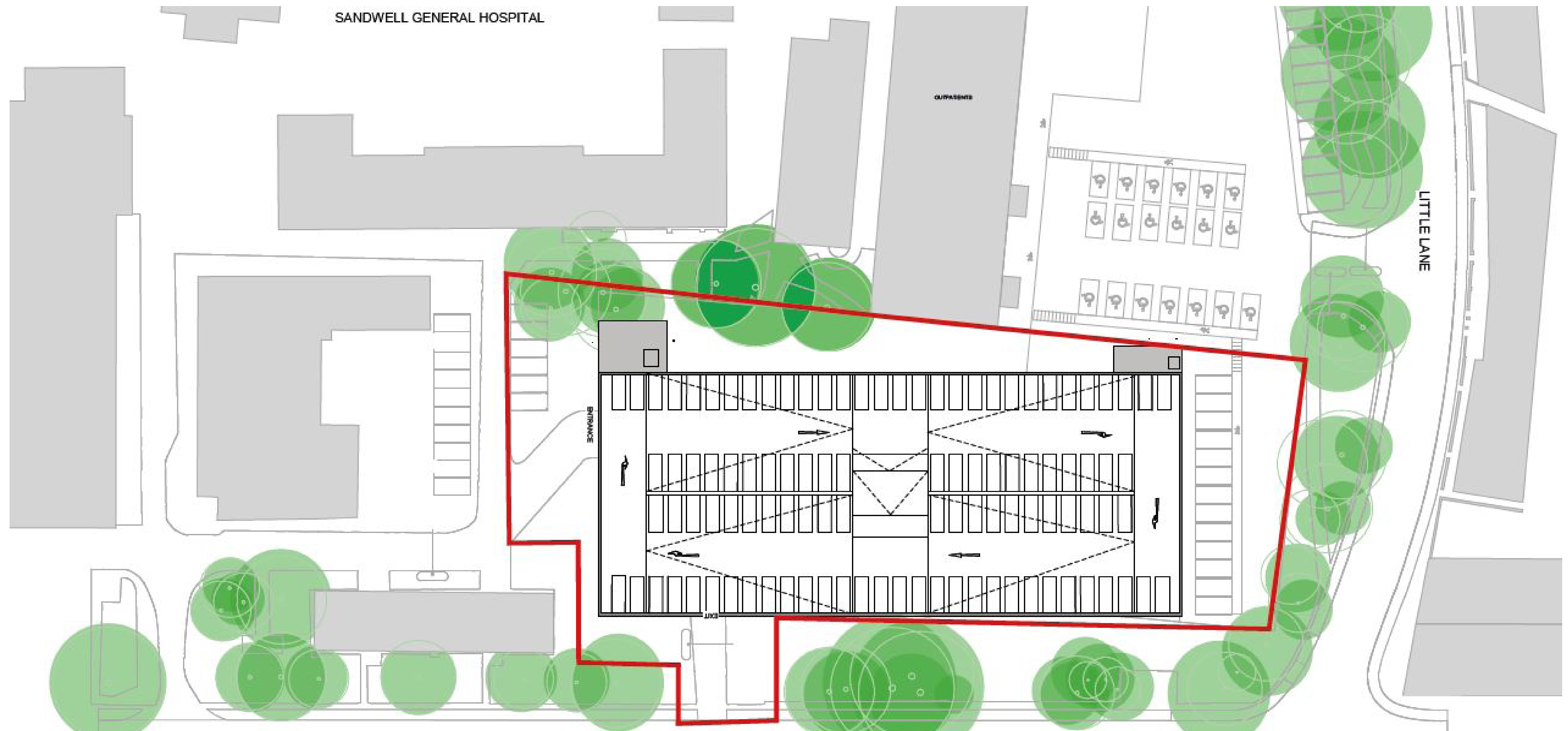


What have we considered?

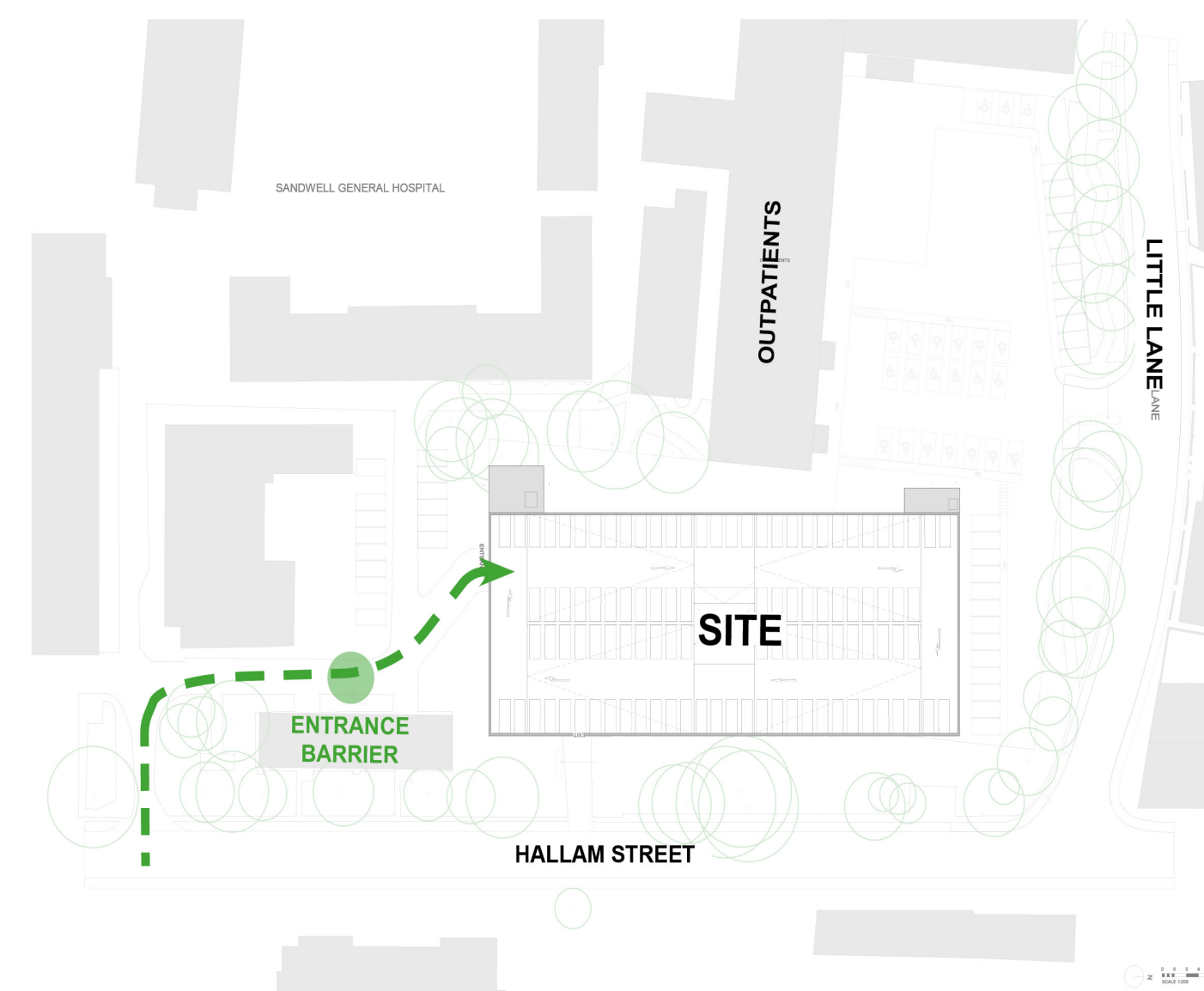
- Quality, safety and security
- Good design and sustainability
- Site context and adjacent uses
- Accessibility
- Capacity
- Resources
- Affordable and value for money
- Integration



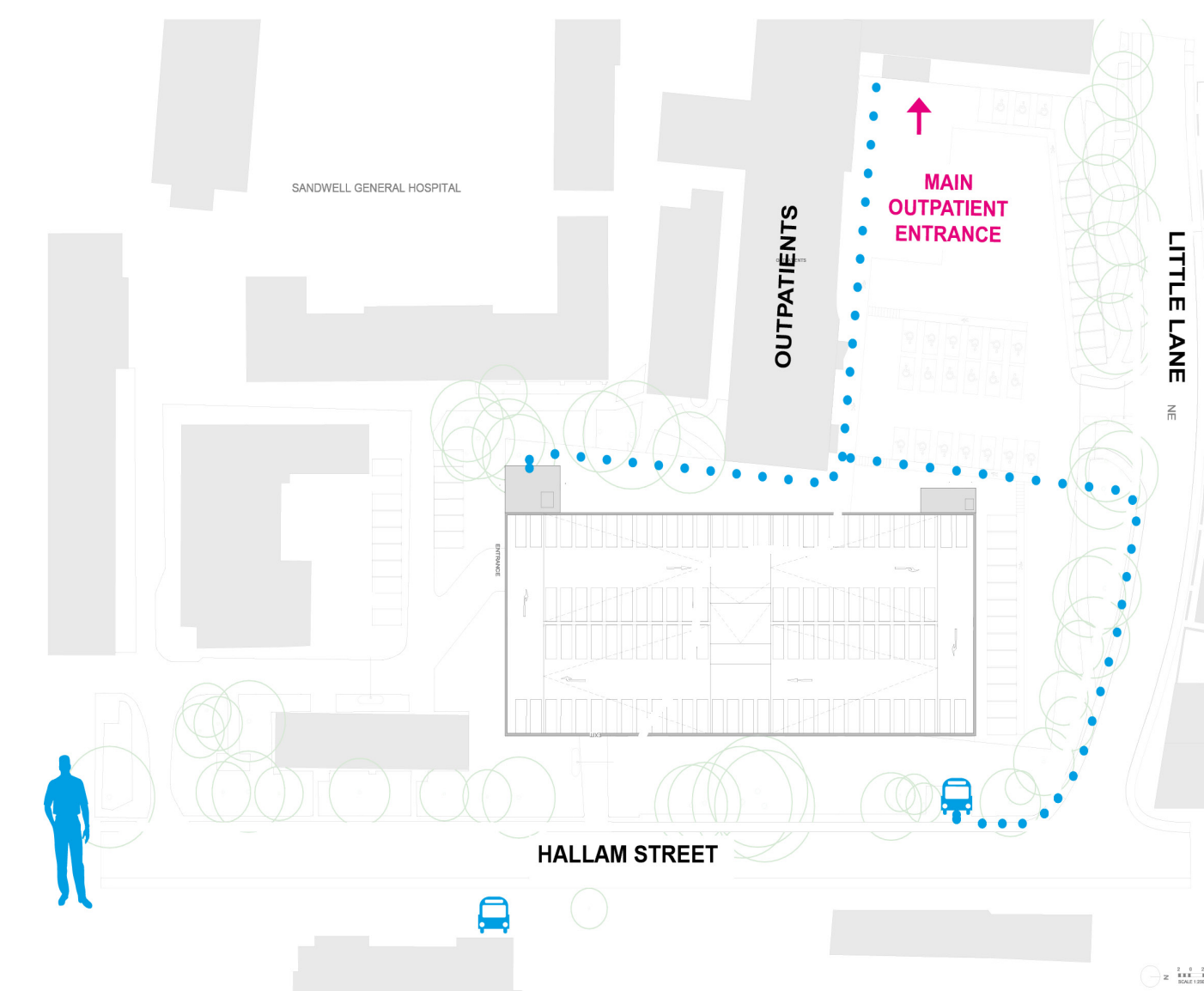
Site plan



Highways and access



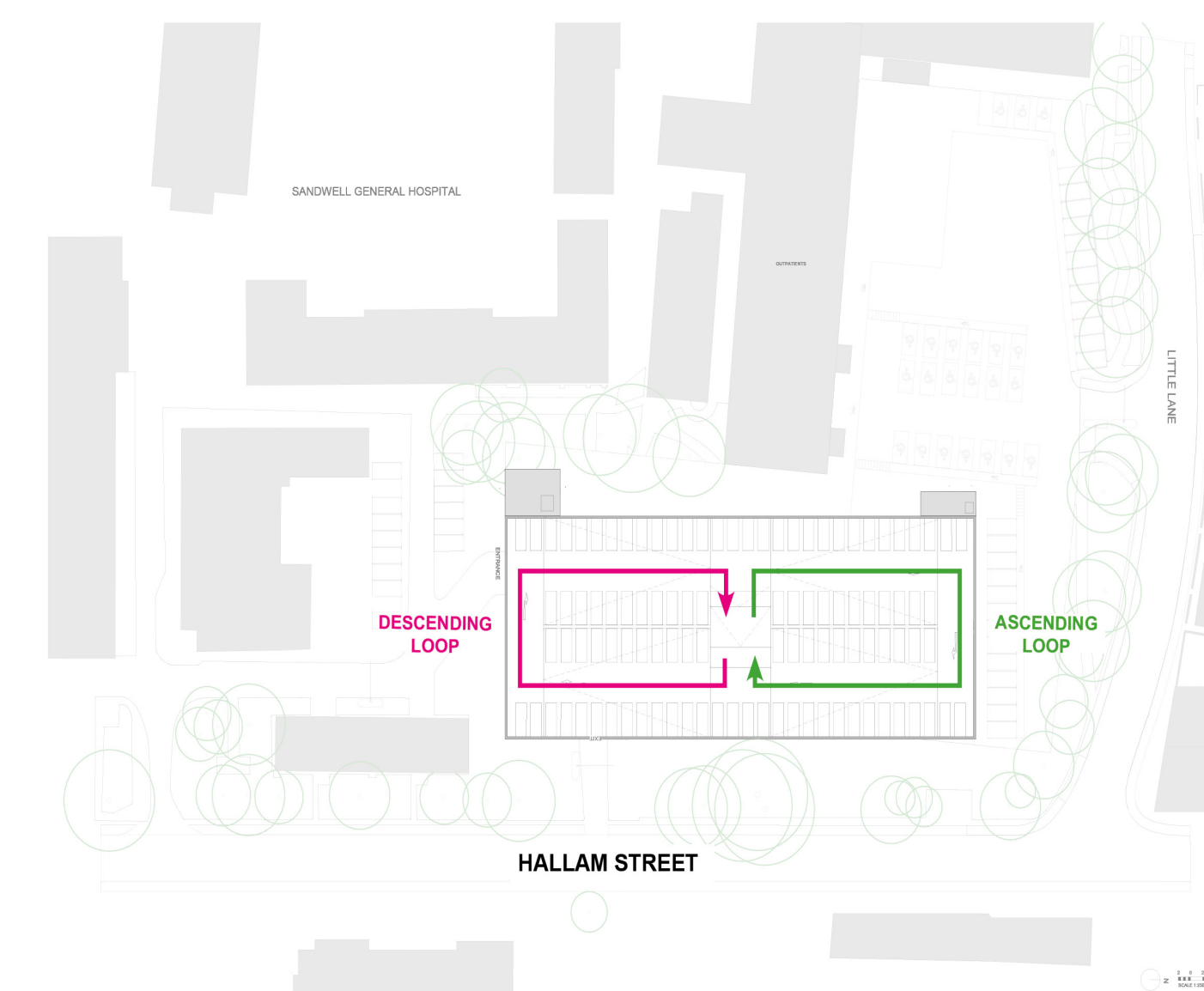
ENTRANCE ROUTE



PEDESTRIAN ROUTE



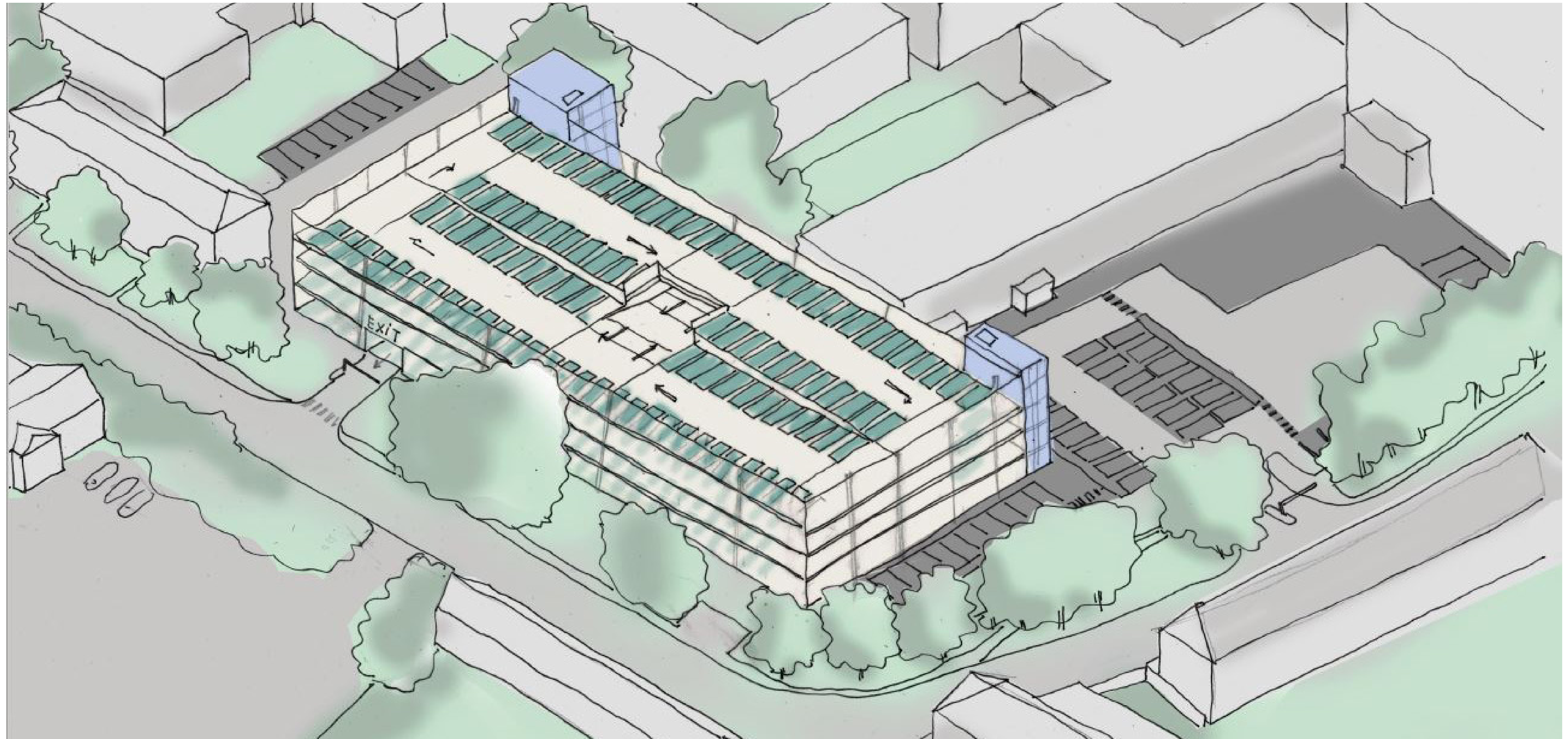
EXIT ROUTE



INTERNAL CIRCULATION



3D View



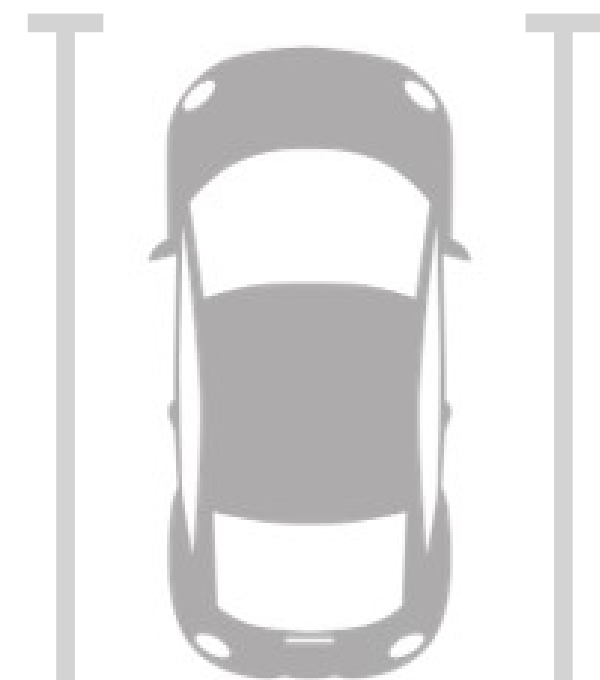
Benefits



Providing spaces on hospital site to meet demand



400 spaces in
the multi-storey
car park



More efficient
parking layout



More efficient
use of land



Improved
traffic flow



Reduction of
parking on
local roads

Frequently asked questions



Q: When would work start on the new car park?

A: Feedback from our public consultation event today will help us develop our plans over the coming weeks and we hope to submit a planning application to Sandwell Metropolitan Borough Council in November 2019. If the application is approved, we will be looking to start construction of the car park in April 2020.

Q: How long will it take to build?

A: The construction work is expected to take around 12 months to complete, subject to approvals. The car park should be operational by April 2021.

Q: Where will staff and patients/visitors park while the new car park is being built?

A: An additional 100+ space visitor car park has been opened in Little Lane. The Trust has taken space in the New Square car park in central West Bromwich to allow 200 staff to park off-site while construction work is going on.

Q: Will this affect the cost of parking?

A: No, the new car park will not affect the cost of parking.

Thank you!



Next steps

Feedback from this event will help us to develop our final plans and we hope to submit a planning application to Sandwell Metropolitan Borough Council in the next few weeks.

Thank you for taking the time to join us today

If you have any feedback on the new car park, we would like to hear your thoughts. You can speak to a member of the team to share your views and ask any questions or fill in one of our feedback forms before you leave.

Alternatively, if you would like to send in comments at a later date, please write or email to:

Sandwell General Hospital
Lyndon
West Bromwich
West Midlands
B71 4HJ

email swbh.comms@nhs.net by 1 November 2019.

