

Welcome



Welcome

Welcome to our special drop-in event for people to find out more about our planned developments for the City Hospital site, including improvements to parking facilities and the building of a new 550 space multi-storey car park.

Sandwell & West Birmingham NHS Trust runs the hospital at City and has a number of plans for the development of the hospital site over the coming years.

The City Hospital site will see some significant changes over the coming years as the City Hospital itself closes and some services move to the new Midland Metropolitan Hospital in Smethwick in 2022. The City site will continue to provide services at the Birmingham Treatment Centre, the Birmingham and Midland Eye Centre and the Sheldon Centre. The Trust intends to develop the site, including improving car parking to make sure we can continue to provide high standards of care to our patients.

Proposals for a new multi-storey car park are being developed by the Trust in conjunction with its estates development partner Prime and its car parking operator, Q-Park.



Delivering the project



About the Trust

Sandwell and West Birmingham NHS Trust is an integrated care organisation: we provide acute and specialist hospital services from City Hospital in Birmingham, Sandwell General Hospital in West Bromwich and Rowley Regis Hospital. We provide comprehensive community services to over 300,000 people in the Sandwell area from more than 150 locations. We run two GP practices at three sites in Birmingham and Sandwell.

We are dedicated to improving the lives of local people, to maintaining an outstanding reputation for teaching and education and to embedding innovation and research.

The Trust employs over 6,500 people and spends over £430m of public money, caring for over 530,000 local people from across West Birmingham and all the towns within Sandwell.



PRIME

About Prime

Prime enables health and care providers to make the most of their spaces so all of us can experience better care. We unlock complex estate management challenges with leading industry-specific legal, financial and property planning solutions, and work with your partners to see the projects through development to delivery.



About Q-Park

The WTrust is working with Q-Park to manage parking across its portfolio.

Q-Park is a well-respected car park operator with extensive experience within the UK and across Europe, and a reputation for high quality, secure and well managed car parks. In total Q-Park controls 800,000 parking spaces on more than 3,500 locations.

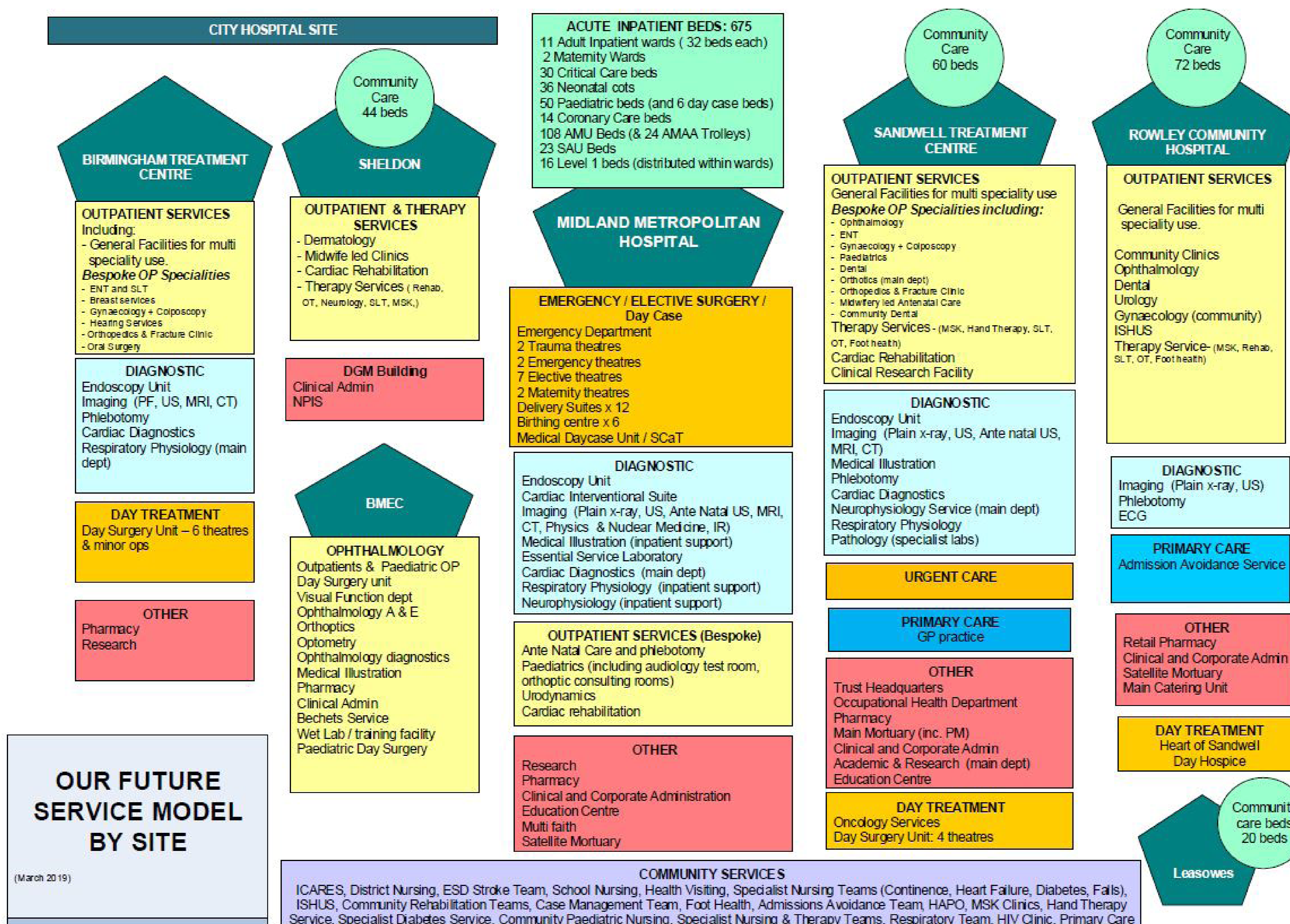


PRIME

Services provided



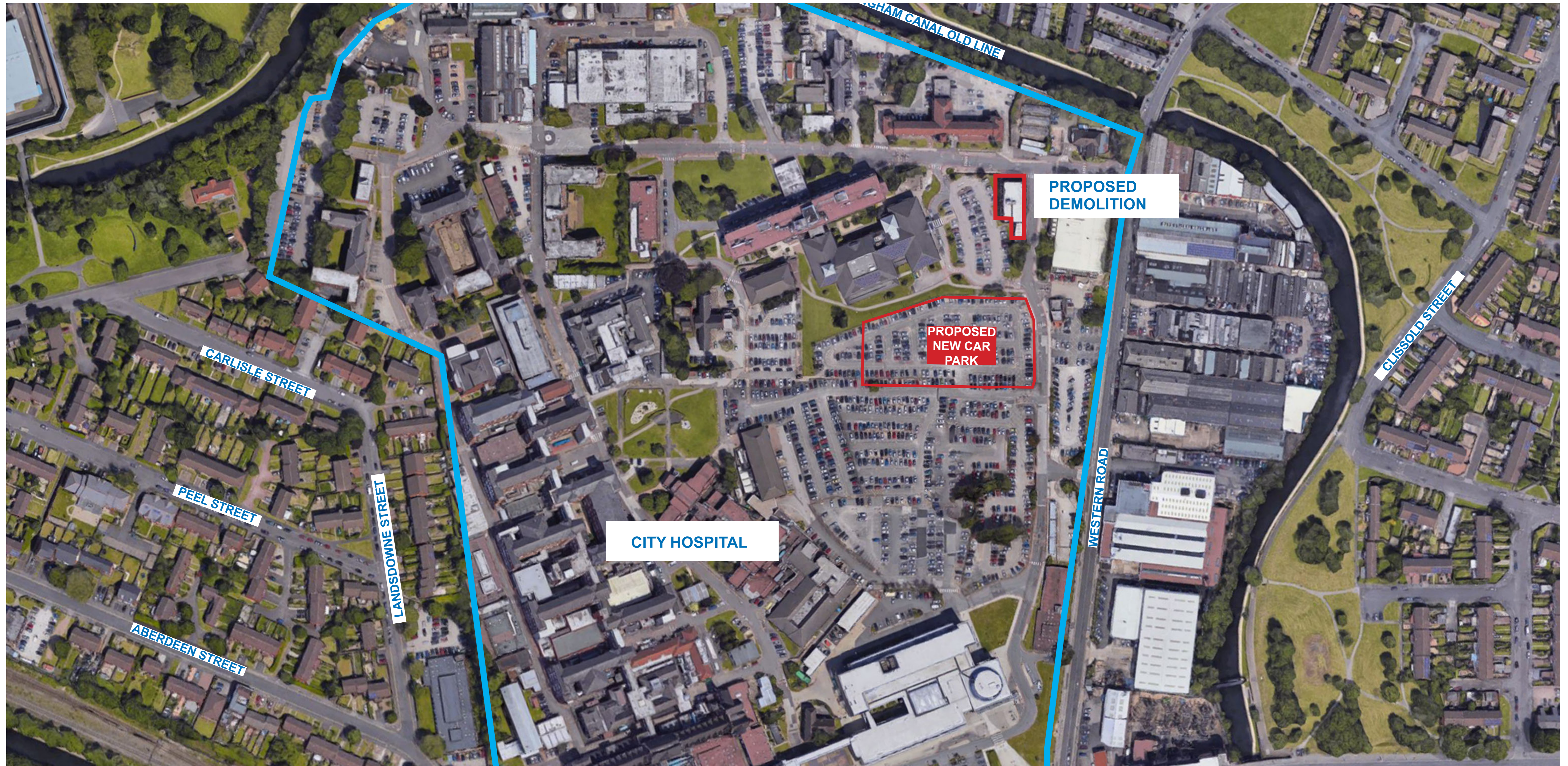
The diagram shows which services will be provided on each of the Trust's sites following the opening of the Midland Metropolitan Hospital



Master plan

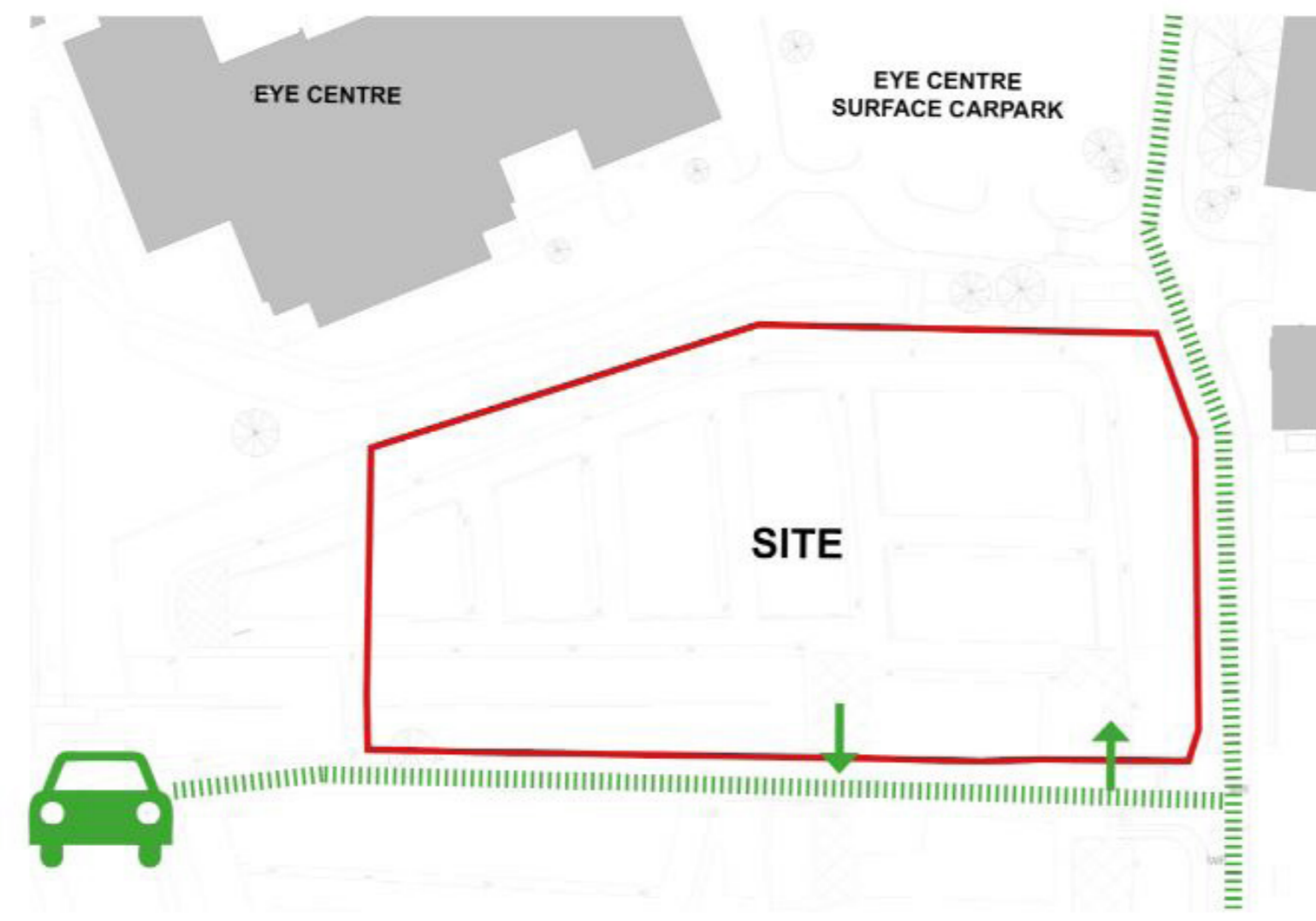


Location

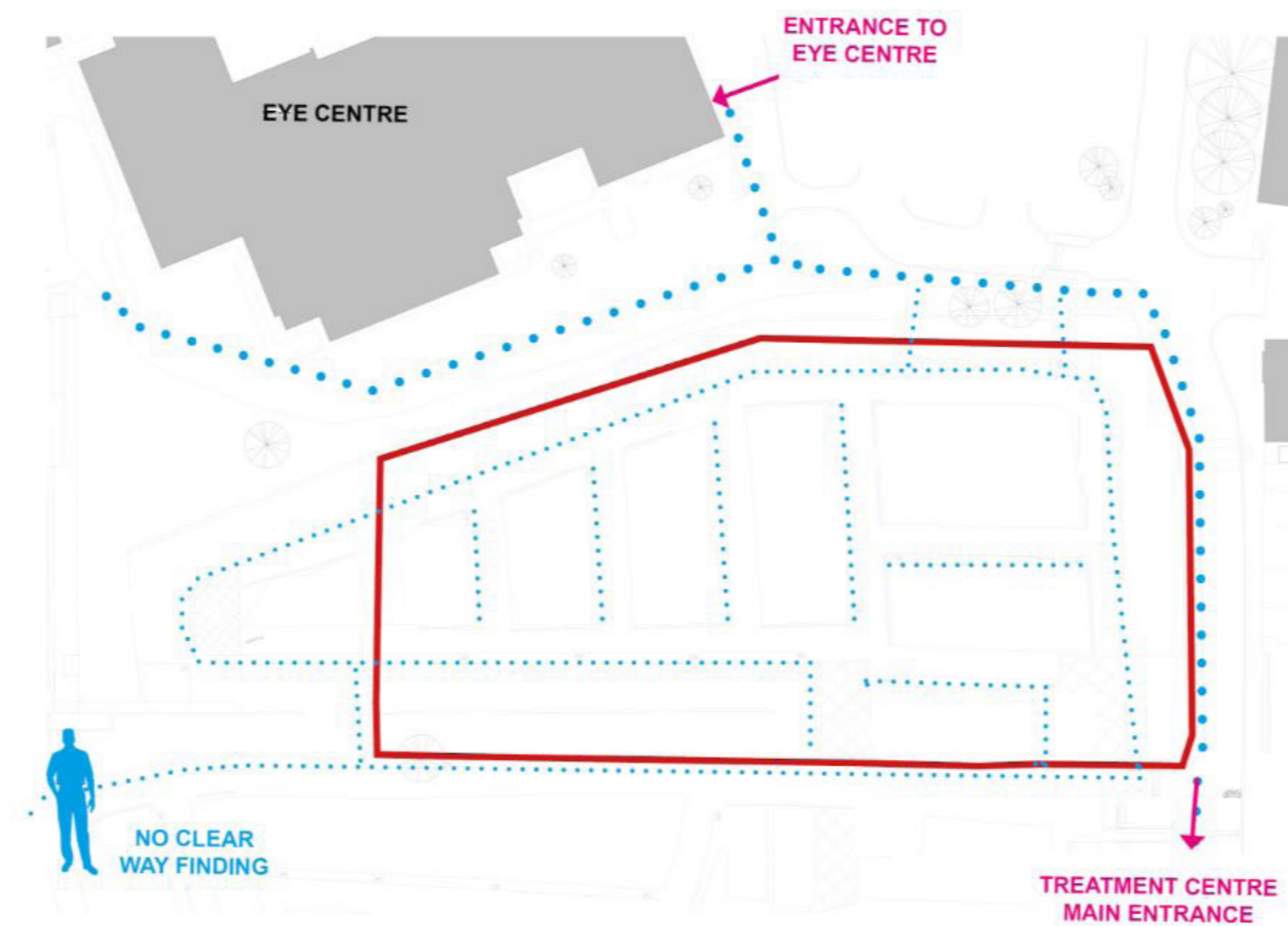


The proposed demolition of the SCaT building will provide additional space for parking during construction of the multi-storey car park and facilitate proposals for wider redevelopment of the site in the longer term.”

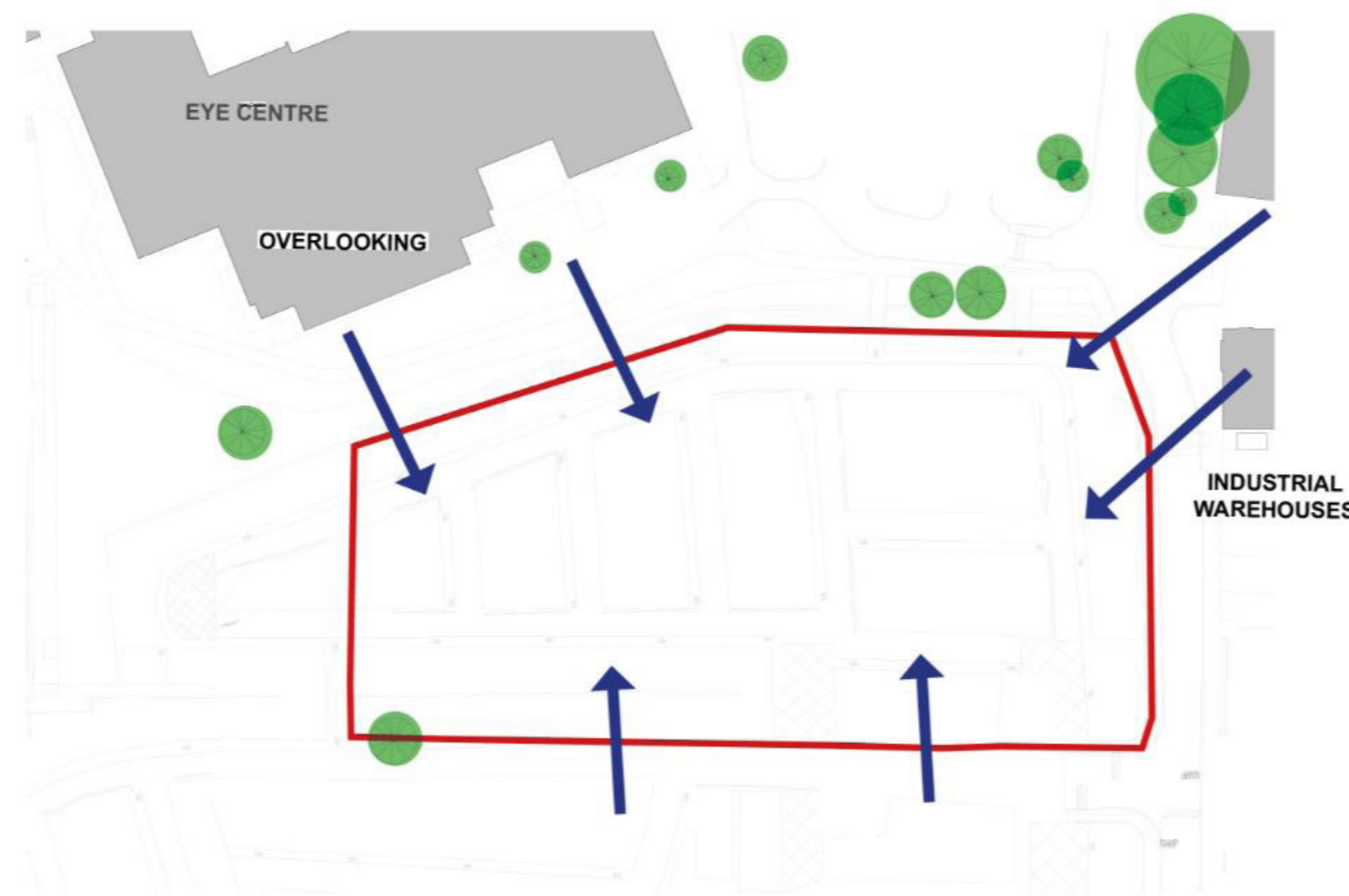
Site analysis



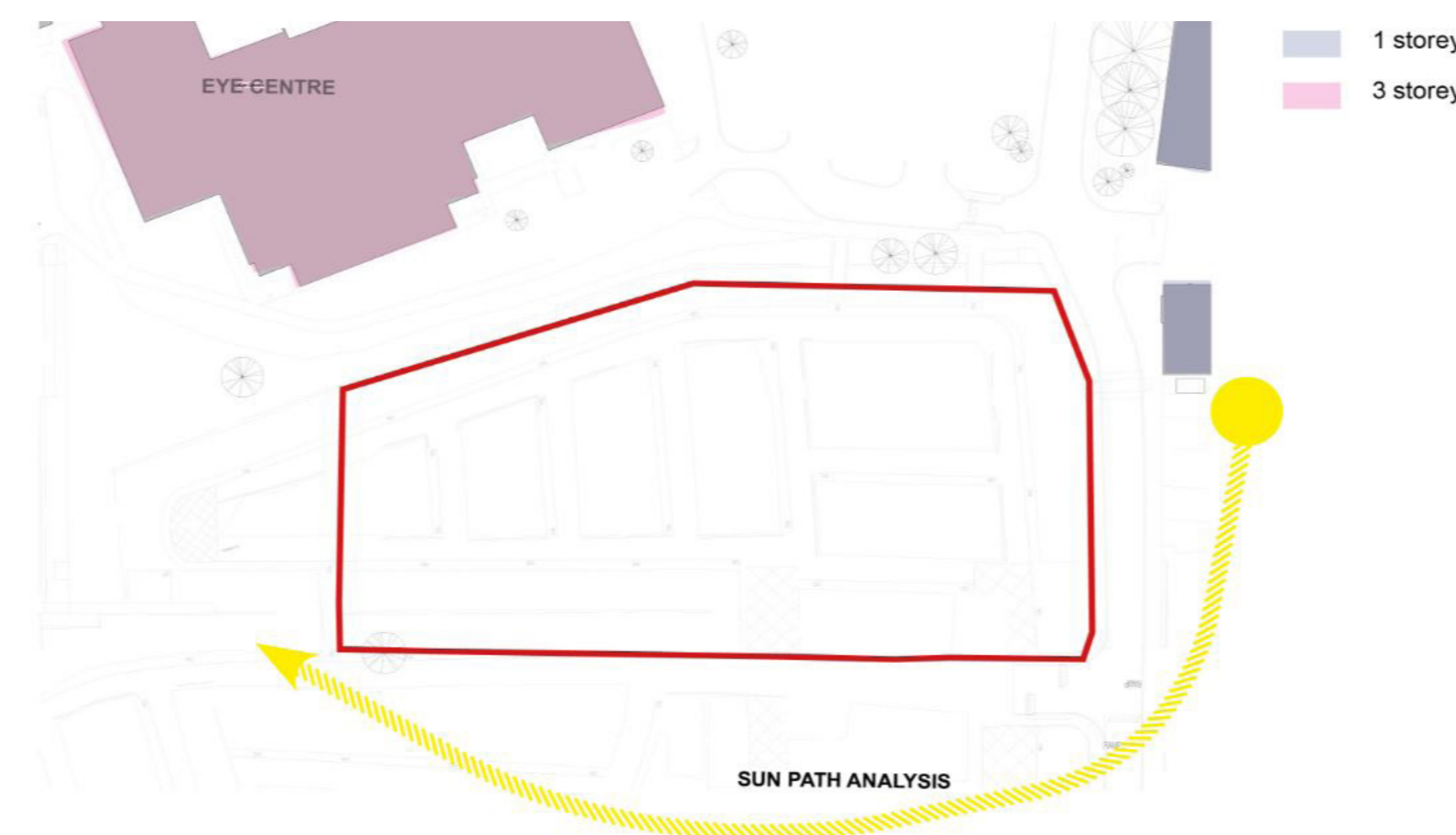
VEHICULAR MOVEMENT



PEDESTRIAN MOVEMENT



VISIBILITY



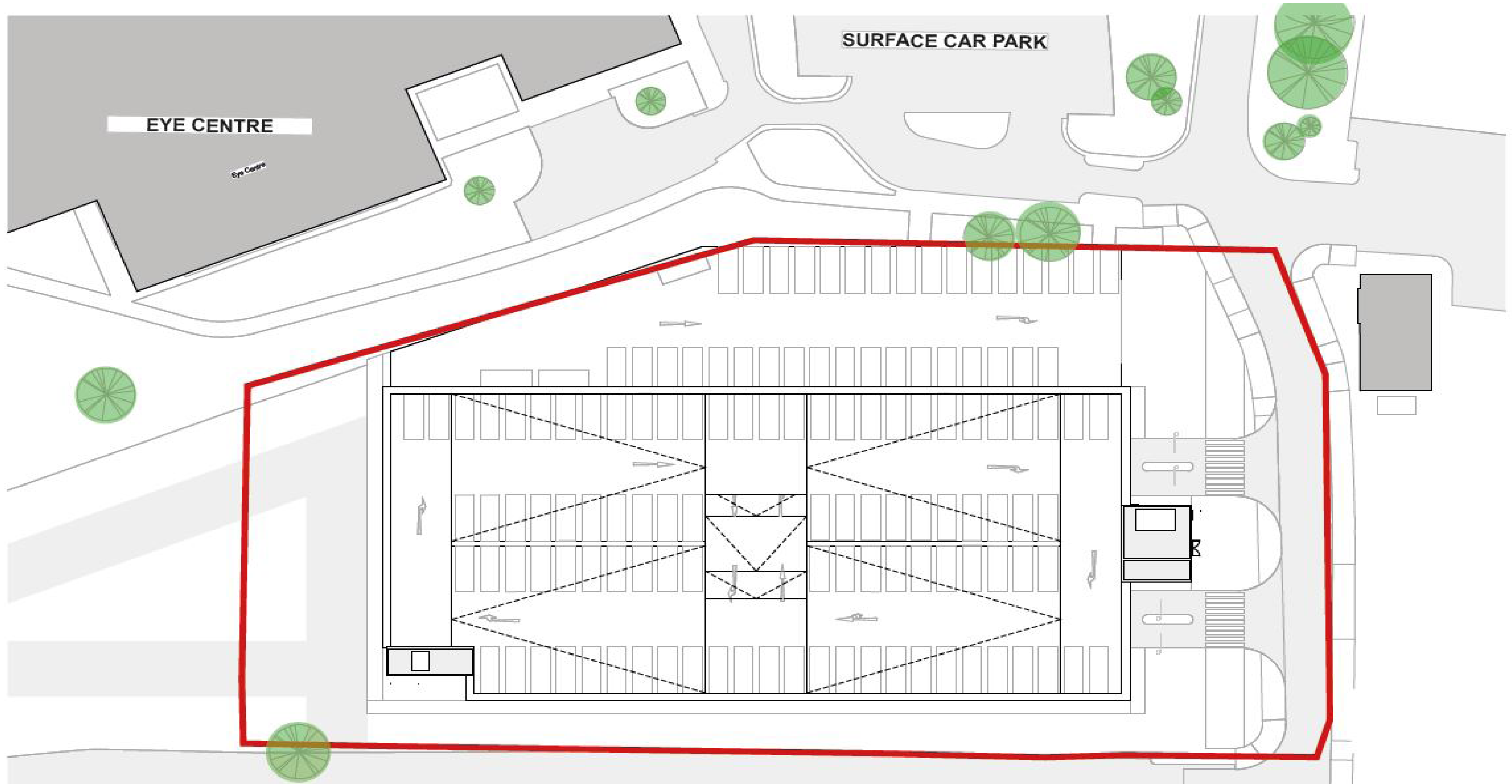
DAYLIGHT AND BUILDING HEIGHTS



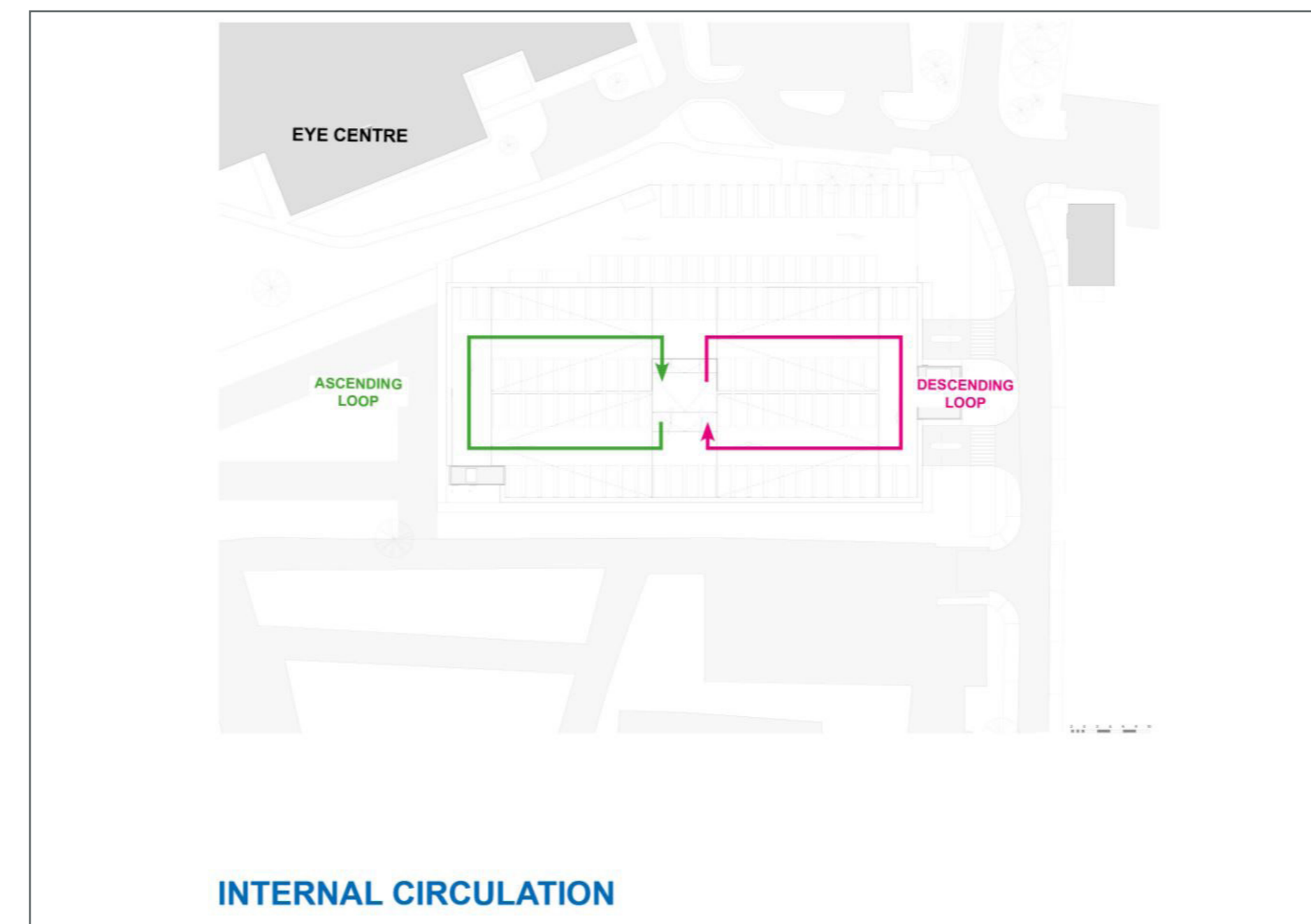
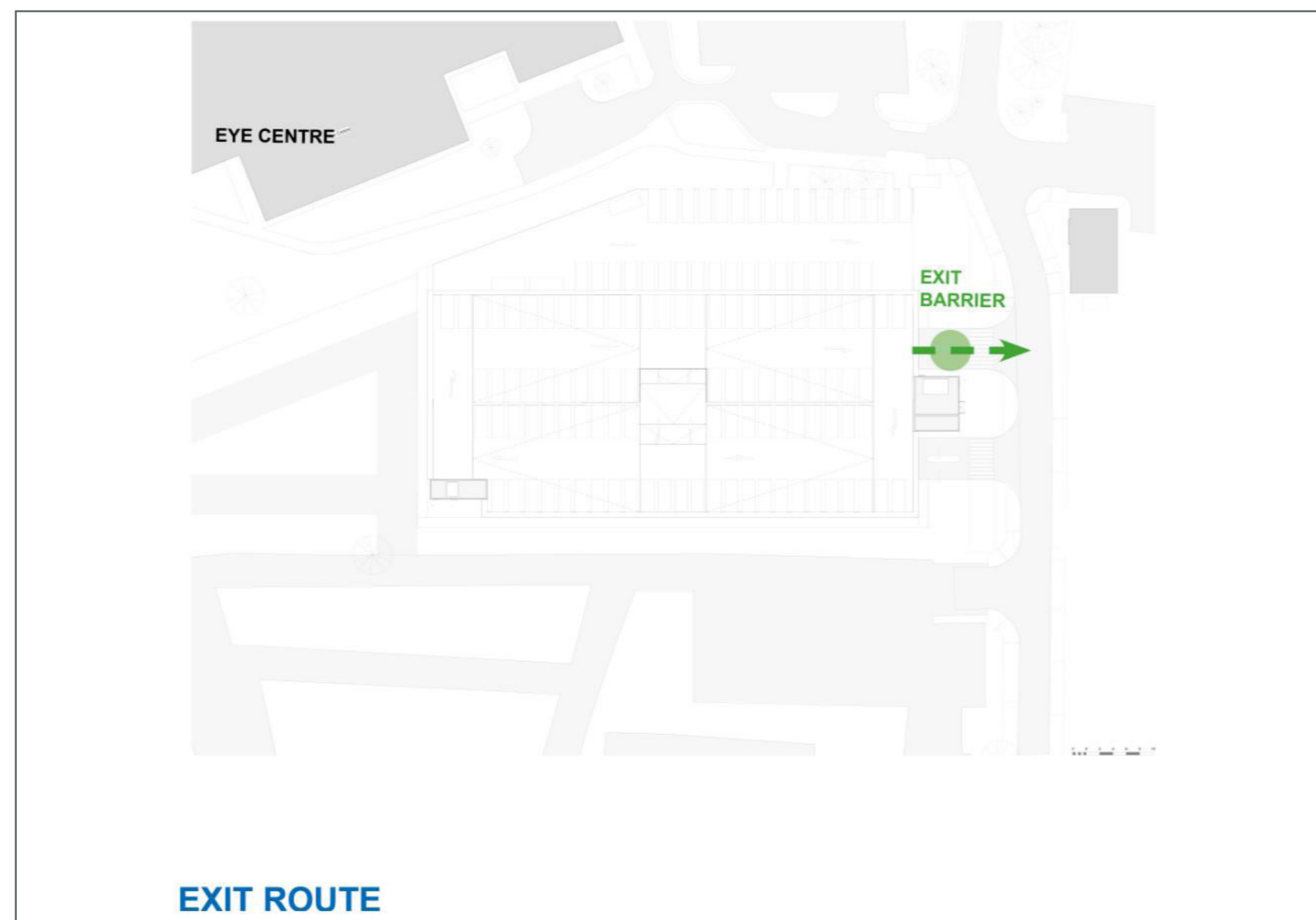
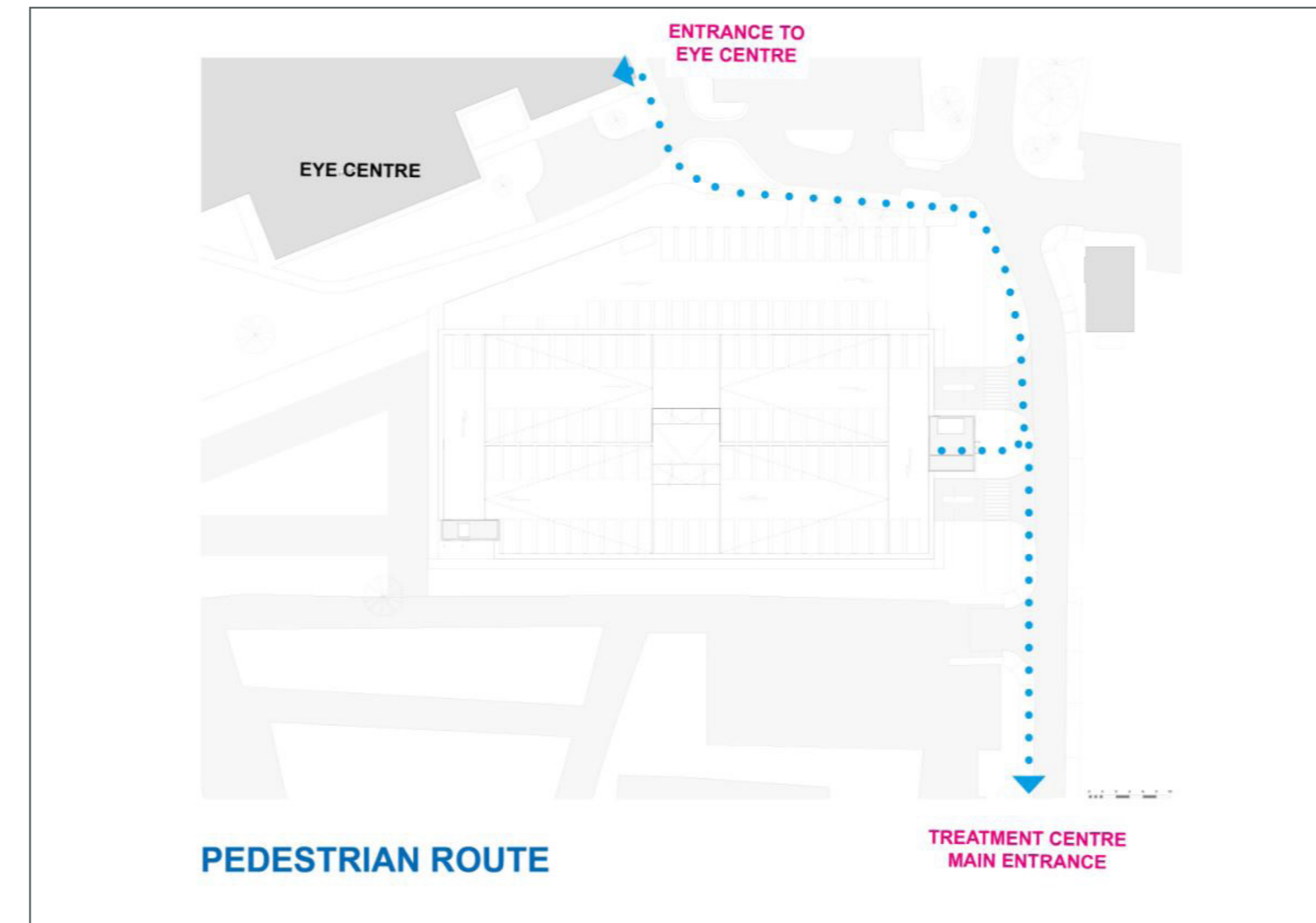
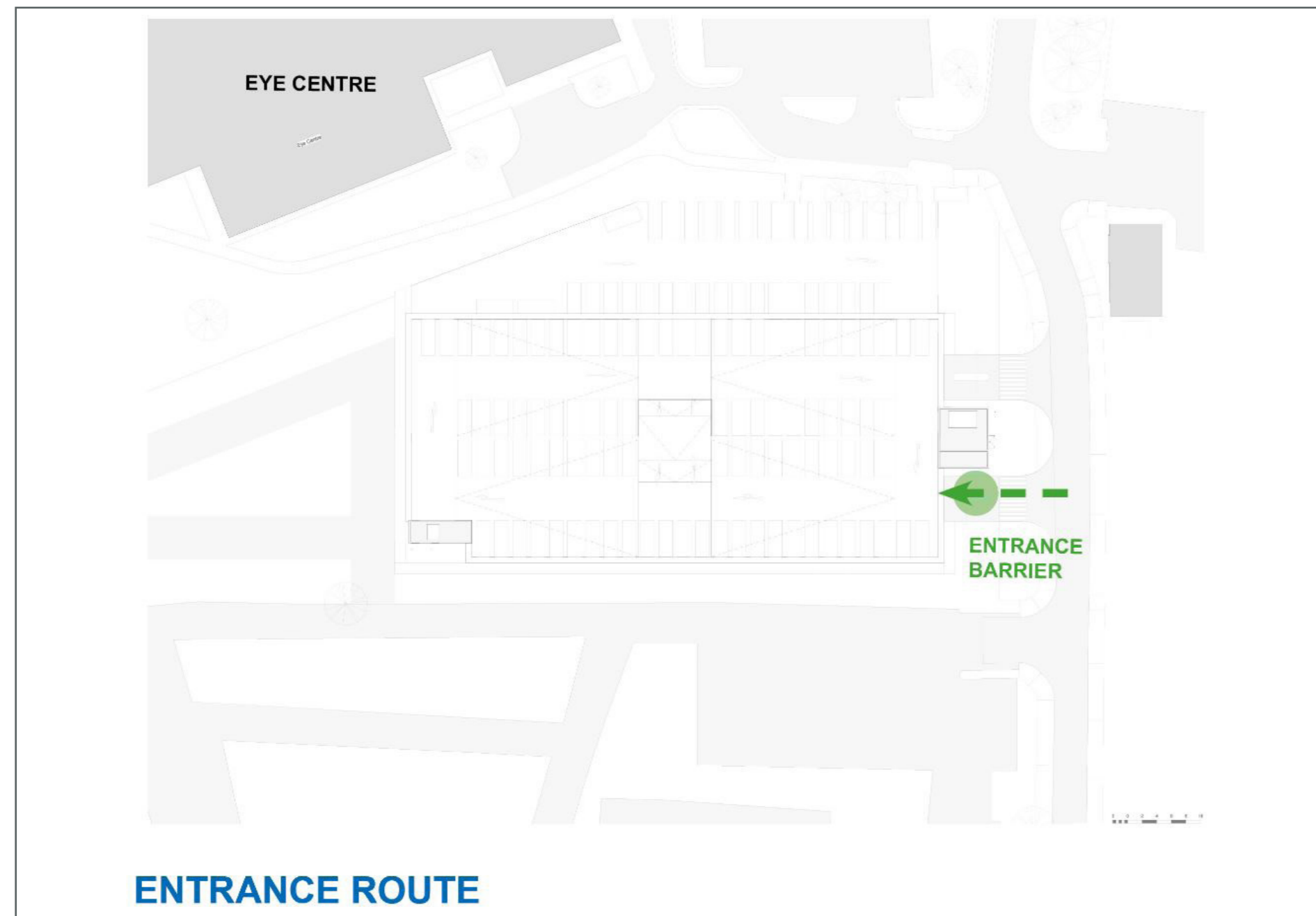
What have we considered?

- Quality, safety and security
- Good design and sustainability
- Site context and adjacent uses
- Accessibility
- Capacity
- Resources
- Affordable and value for money
- Integration

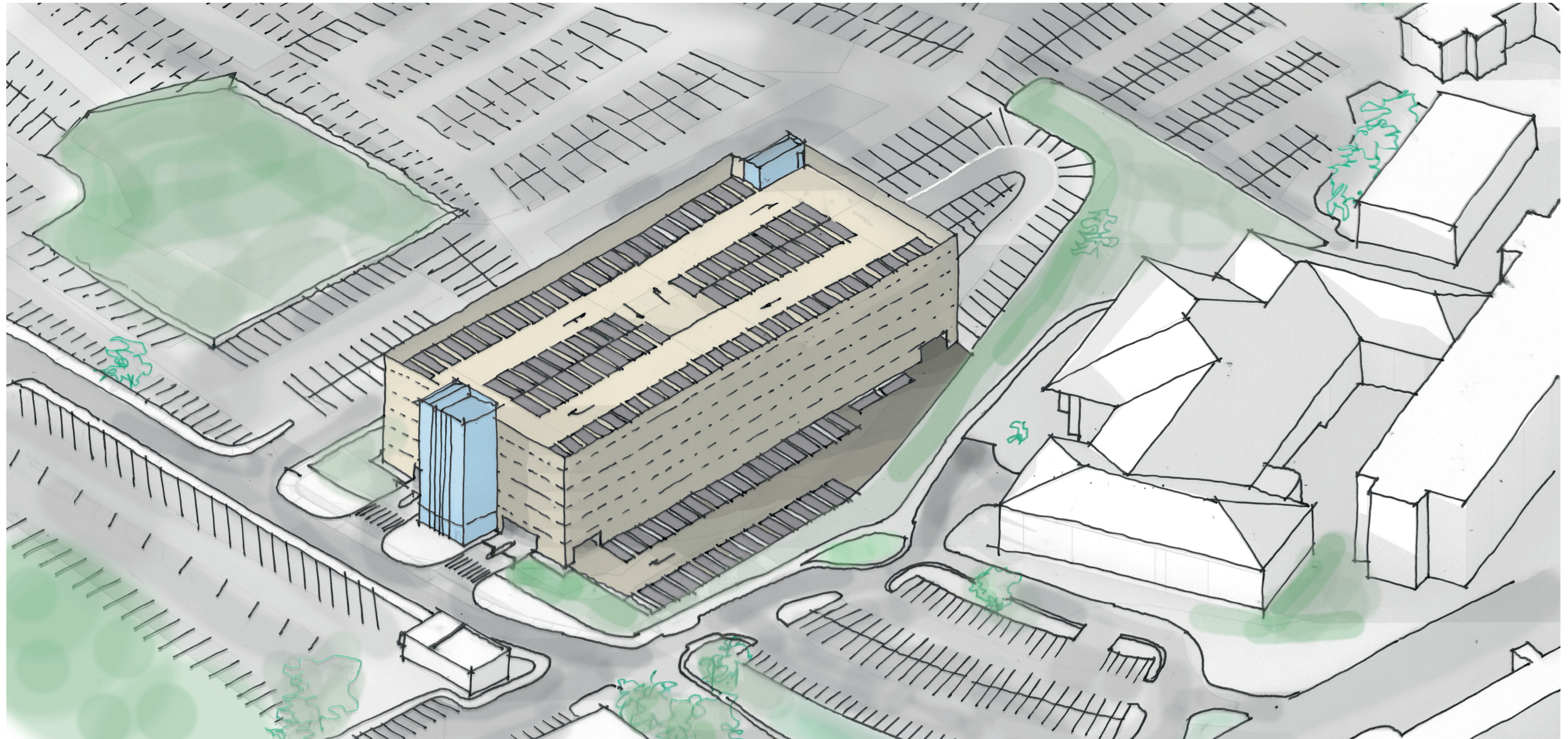
Site plan



Highways and access



3D View



Benefits



Providing spaces to meet demand



550 spaces on hospital site to meet demand



More efficient parking layout

Frequently asked questions



Q: When would work start on the new car park?

A: Feedback from our public consultation event today will help us develop our final plans over the coming weeks and we hope to submit a planning application to Birmingham City Council in November 2019. If the application is approved, we will be looking to start construction of the car park in April 2020.

Q: How long will it take to build?

A: The construction work is expected to take around 12 months to complete, subject to approvals. The car park should be operational by April 2021.

Q: Where will staff and patients/visitors park while the new car park is being built?

A: To allow the construction to start on the new multi-storey car park, temporary parking arrangements will be made available across the rest of the City site.

Q: Will this affect the cost of parking?

A: No, the new car park will not affect the cost of parking.

Thank you!



Next steps

Feedback from this event will help us to develop our final plans and we hope to submit a planning application to Birmingham City Council in the next few weeks.

Thank you for taking the time to join us today

If you have any feedback on the new car park, we would like to hear your thoughts. You can speak to a member of the team to share your views and ask any questions or fill in one of our feedback forms before you leave.

Alternatively, if you would like to send in comments at a later date, please write or email to:

Sandwell General Hospital
Lyndon
West Bromwich
West Midlands
B71 4HJ

email swbh.comms@nhs.net by 1 November 2019.

