

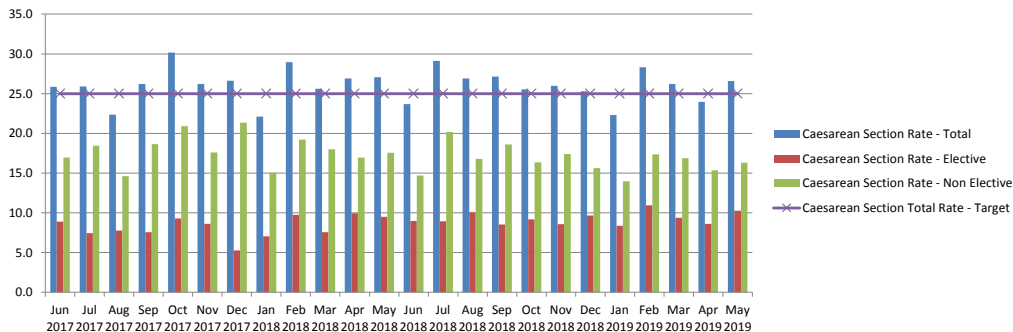
Patient Safety - Obstetrics

Data Quality	Last review	PAF	Indicator	Measure	Trajectory 2016-2017	
					Year	Month
			Caesarean Section Rate - Total	<= %	25.0	25.0
		●	Caesarean Section Rate - Elective	<= %		
		●	Caesarean Section Rate - Non Elective	<= %		
		d	Maternal Deaths	<= No	0	0
			Post Partum Haemorrhage (>2000ml)	<= No	48	4
			Admissions to Neonatal Intensive Care (Level 3)	<= %	10.0	10.0
			Adjusted Perinatal Mortality Rate (per 1000 babies)	<= Rate1	8.0	8.0
			Stillbirth Rate (Corrected) (per 1000 babies)	Rate1		
			Neonatal Death Rate (Corrected) (per 1000 babies)	Rate1		
			Early Booking Assessment (<12 + 6 weeks) - SWBH Specific	=> %	85.0	85.0
			Early Booking Assessment (<12 + 6 weeks) - National Definition	=> %	90.0	90.0
			Breast Feeding Initiation (Quarterly)	=> %	74.0	74.0
	Apr-19	●	Puerperal Sepsis and other puerperal infections (variation 1 - ICD10 O85 or O86) (%) -	<= %		
	Apr-19	●	Puerperal Sepsis and other puerperal infections (variation 2 - ICD10 O85 or O86 Not O864) (%)	<= %		
	Apr-19	●	Puerperal Sepsis and other puerperal infections (variation 3 - ICD10 O85) (%)	<= %		

Previous Months Trend (since Dec 2017)																	
D	J	F	M	A	M	J	J	A	S	O	N	D	J	F	M	A	M
●	●	●	●	●	●	●	●	●	●	●	●	●	●	●	●	●	●
5	7	10	8	10	10	9	9	10	9	9	9	10	8	11	9	9	10
21	15	19	18	17	18	15	20	17	19	16	17	16	14	17	17	15	16
●	●	●	●	●	●	●	●	●	●	●	●	●	●	●	●	●	●
4.02	1.99	2.58	4.66	5.98	6.16	4.41	2.05	4.17	0.00	7.86	2.23	4.57	2.30	2.51	4.64	0.00	6.25
●	●	●	●	●	●	●	●	●	●	●	●	●	●	●	●	●	●
0.00	0.00	2.58	0.00	1.99	0.00	4.41	4.10	2.08	0.00	0.00	2.23	0.00	0.00	2.51	0.00	0.00	2.08
●	●	●	●	●	●	●	●	●	●	●	●	●	●	●	●	●	●
0.6	0.9	1.1	1.0	0.8	0.5	0.9	1.5	1.3	1.2	1.7	2.6	1.2	2.1	0.6	0.5	1.8	2.2
●	●	●	●	●	●	●	●	●	●	●	●	●	●	●	●	●	●
0.6	0.7	0.4	0.7	0.8	0.5	0.6	0.9	1.3	1.2	1.7	2.6	1.2	2.1	0.6	0.5	0.9	1.9
●	●	●	●	●	●	●	●	●	●	●	●	●	●	●	●	●	●
0.0	0.2	0.0	0.0	0.3	0.2	0.0	0.6	0.5	0.3	0.8	1.5	0.4	1.9	0.0	0.0	0.0	0.6

Data Period	Month	Year To Date	Trend
May 2019	26.6	25.3	
May 2019	10.3	9.5	
May 2019	16.3	15.9	
May 2019	0	0	
May 2019	3	5	
May 2019	2.08	1.53	
May 2019	8.33	4.36	
May 2019	6.25	3.27	
May 2019	2.08	1.09	
May 2019	89.9	91.4	
May 2019	130.8	133.3	
May 2019	77.94	77.90	
May 2019	2.17	2.01	
May 2019	1.86	1.46	
May 2019	0.62	0.36	

Caesarean Section Rate (%)



Registrations & Deliveries

