

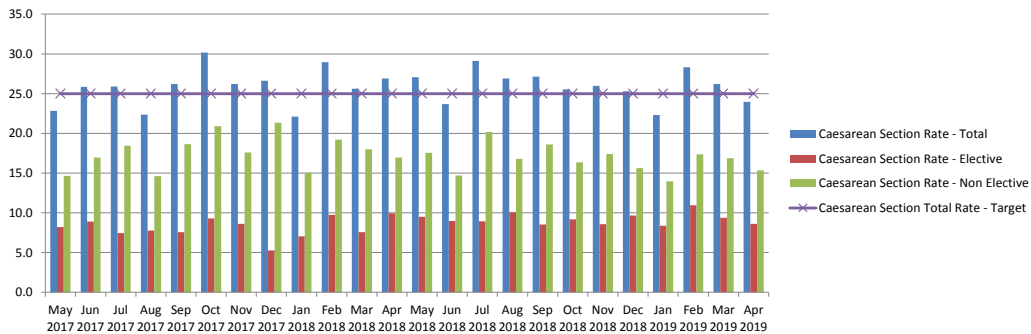
Patient Safety - Obstetrics

Data Source	Data Quality	PerFramework	Indicator	Measure	Trajectory	
					2016-2017	Year Month
3		National	Caesarean Section Rate - Total	<= %	25.0	25.0
3		for info	Caesarean Section Rate - Elective	<= %		
3		for info	Caesarean Section Rate - Non Elective	<= %		
2		National	Maternal Deaths	<= No	0	0
3		National	Post Partum Haemorrhage (>2000ml)	<= No	48	4
3		National	Admissions to Neonatal Intensive Care (Level 3)	<= %	10.0	10.0
12		National	Adjusted Perinatal Mortality Rate (per 1000 babies)	<= Rate1	8.0	8.0
12		no threshold	Stillbirth Rate (Corrected) (per 1000 babies)	Rate1		
12		no threshold	Neonatal Death Rate (Corrected) (per 1000 babies)	Rate1		
12		Local	Early Booking Assessment (<12 + 6 weeks) - SWBH Specific	=> %	85.0	85.0
12		National	Early Booking Assessment (<12 + 6 weeks) - National Definition	=> %	90.0	90.0
2		Local	Breast Feeding Initiation (Quarterly)	=> %	74.0	74.0
2		no threshold	Puerperal Sepsis and other puerperal infections (variation 1 - ICD10 O85 or O86) (%) -	<= %		
2		no threshold	Puerperal Sepsis and other puerperal infections (variation 2 - ICD10 O85 or O86 Not O864) (%)	<= %		
2		no threshold	Puerperal Sepsis and other puerperal infections (variation 3 - ICD10 O85) (%)	<= %		

Previous Months Trend (since Nov 2017)																	
N	D	J	F	M	A	M	J	J	A	S	O	N	D	J	F	M	A
9	5	7	10	8	10	10	9	9	10	9	9	9	10	8	11	9	9
18	21	15	19	18	17	18	15	20	17	19	16	17	16	14	17	17	15
2.10	4.02	1.99	2.58	4.66	5.98	6.16	4.41	2.05	4.17	0.00	7.86	2.23	4.57	2.30	2.51	4.64	0.00
2.10	0.00	0.00	2.58	0.00	1.99	0.00	4.41	4.10	2.08	0.00	0.00	2.23	0.00	0.00	2.51	0.00	0.00
0.8	0.6	0.9	1.1	1.0	0.8	0.5	0.9	1.5	1.3	1.2	1.7	2.6	1.2	2.1	0.6	0.5	1.8
0.5	0.6	0.7	0.4	0.7	0.8	0.5	0.6	0.9	1.3	1.2	1.7	2.6	1.2	2.1	0.6	0.5	0.9
0.0	0.0	0.2	0.0	0.0	0.3	0.2	0.0	0.6	0.5	0.3	0.8	1.5	0.4	1.9	0.0	0.0	0.0

Data Period	Month	Year To Date	Trend
Apr 2019	24.0	24.0	
Apr 2019	8.6	8.6	
Apr 2019	15.3	15.4	
Apr 2019	0	0	
Apr 2019	2	2	
Apr 2019	0.91	0.91	
Apr 2019	-	-	
Apr 2019	-	-	
Apr 2019	93.1	93.1	
Apr 2019	135.9	135.9	
Apr 2019	77.86	77.86	
Apr 2019	1.77	1.77	
Apr 2019	0.89	0.88	
Apr 2019	0.00	0.00	

Caesarean Section Rate (%)



Registrations & Deliveries

