

# Midland Metropolitan Hospital Welcome

**Thank you for visiting the exhibition on the latest design proposals for the new acute Midland Metropolitan Hospital.**

Sandwell and West Birmingham NHS Trust and their proposed development partner Carillion are submitting a planning application for the new hospital and associated facilities. Before we do so we would like to show you the latest plans and get your feedback on them.



## The New Hospital

Midland Metropolitan Hospital is a brand new, state-of-the-art acute hospital for the 530,000 people living in Sandwell and West Birmingham

## How the scheme has been consulted on before

This consultation builds on previous rounds of consultation on the proposals for the new acute hospital.

Between 2006 and 2007 a major public consultation was held on changes to the way services are provided between City and Sandwell hospitals. Local partners were consulted on the reconfiguration of services in Sandwell and West Birmingham and this consultation included proposals for a new single specialist acute centre.

Carillion are the proposed development partner for the new hospital. They have worked extensively with Sandwell Metropolitan Borough Council and Sandwell and West Birmingham NHS Trust to provide their views and advice on the design of the new hospital.



Good public access

## The purpose of the exhibition

This exhibition presents the final proposed design for the hospital and builds on previous consultations that focused on various clinical issues.

Following the consultation process, all of the comments received will be collated and considered as part of the planning application.



Pleasant patient experience

This booklet provides further details on the plans as well as the new services and facilities that will be provided. Please take a look at the proposals. If you have any questions about any aspect of the proposals, please do not hesitate to approach one of the project team.

# Midland Metropolitan Hospital

## The site plan

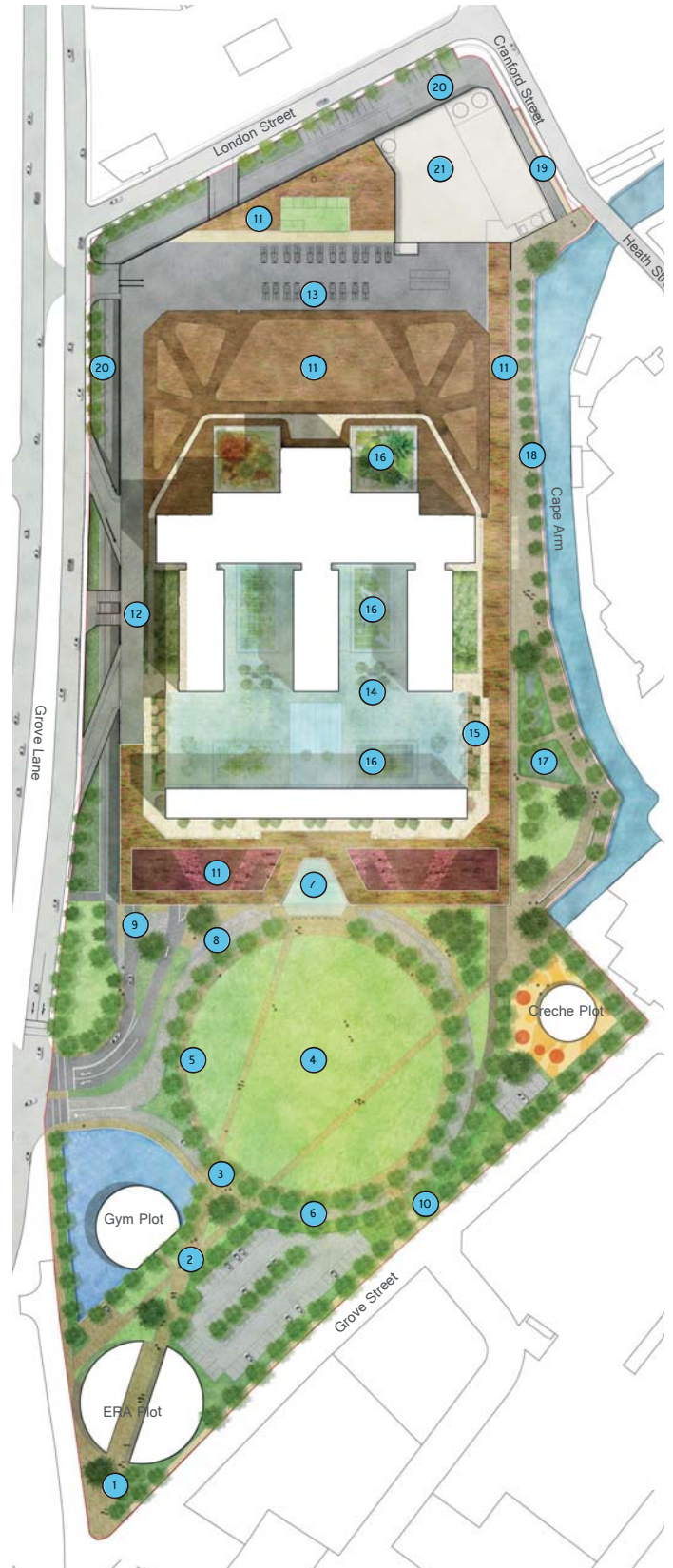
The site is located on vacant brownfield land on Grove Lane in Smethwick. The site is also bordered by London Street, Cranford Street, Grove Street and The Cape Arm Canal.

The illustrative masterplan below shows the proposed layout of the hospital and facilities when completed.



Current site aerial

- |   |   |
|---|---|
| 1. Local plaza                                | 12. Maternity and Emergency Department entrance |
| 2. Approach from Dudley Road                  | 13. Emergency Department terrace                |
| 3. Crossing / raised table                    | 14. Winter garden                               |
| 4. Green                                      | 15. Winter garden terraces                      |
| 5. 'Green necklace', footpath and rain garden | 16. Internal courtyards                         |
| 6. Bus route                                  | 17. Wetland habitat                             |
| 7. Main entrance                              | 18. New canal towpath                           |
| 8. Bus drop-off                               | 19. New pedestrian / cycle path                 |
| 9. Car park entrance                          | 20. Maintenance access                          |
| 10. Access from Grove Street                  | 21. Service / maintenance yard                  |
| 11. Wildlife terraces                         |   |



# Midland Metropolitan Hospital Background to the new hospital

## Why do we need a new hospital?

The new Midland Metropolitan Hospital brings together emergency and acute healthcare onto a single site.

Attractive appearance



Welcoming and non-threatening environment



It is essential that acute services at Sandwell and City Hospitals be centralised at one, fit-for-purpose, technologically advanced premises to enable all services to be better located in the community and to improve care.

### There are many benefits that the new acute hospital will provide, these include:

- Enabling the delivery of a new model of care to improve health in the local area
- Significant investment in a new modern hospital that can facilitate high quality facilities to provide the best patient experience
- Sustaining top quality, acute services for an increasing population

## What will the planning application be for?

The application will be a single hybrid application and will cover the whole site. It will consist of the following components of the development:

### A new 10 level Hospital comprising

- Car park
- Podium incorporating "hot clinical uses"
- Wards
- Sky Garden
- Winter Garden

### Vehicle access

Access points and internal roads on the following entrance points:

- Grove Lane: Public, public transport, emergency and maternity departments, and 'blue light' A&E
- Grove Street: Access to outline development plots
- London Street: Servicing and staff access

### High quality public realm and landscaping around the hospital

- The Park
- Canal and Cape Arm frontage

### Outline Development Plots

The application will also include three development plots to the southern areas of the site which will be taken forward through a separate planning application by the Trust.

# Midland Metropolitan Hospital

## What happens to existing local hospitals?

The new Midland Metropolitan Hospital will bring together treatment and care services on to one site, promoting better patient care whilst ensuring the best value for money for the taxpayer.

The new hospital will not lead to the closure of all of the facilities at Sandwell, City and Rowley Regis hospital sites. Extensive healthcare services will still be situated at each site, providing a range of outpatient, day case and diagnostic services. For these purposes, the best of the existing buildings will be kept.

A landmark building



### City Hospital

The trust will retain three key facilities on Dudley Road:

#### Birmingham Treatment Centre

The Trust will retain the Centre for one-stop diagnosis and treatment, including day surgery. It will retain the majority of its existing facilities.

#### Birmingham and Midland Eye Centre (BMEC)

The Birmingham and Midland Eye Centre is the second largest facility of its kind in Europe. On the same site as the current City Hospital, the facility receives referrals from hospitals and GPs across the region.

BMEC will continue to offer:

- Ophthalmology A&E
- Diagnostics
- Day surgery from three operating theatres
- Outpatients

#### The Sheldon building

This will increasingly become the intermediate and rehabilitative unit for predominantly West Birmingham residents, providing:

- Intermediate Care
- Rehabilitation - Cardiac Rehabilitation and Musculo-Skeletal
- Occupational Therapy



### Sandwell General Hospital

The site will house the Sandwell Treatment Centre and the headquarters for the Trust, providing:

- Recovery and rehabilitation beds
- Day case unit (three operating theatres)
- Endoscopy unit
- Imaging (including MRI & CT scans, X-ray and Ultrasound)
- Outpatients (including paediatrics, ENT and colposcopy)
- Genito-Urinary Medicine
- Therapy
- Urgent Care Centre
- Pathology laboratories
- Orthotics
- Neurophysiology
- Haematology-Oncology Unit



### Rowley Regis Hospital

Rowley Regis Hospital will its expansion and will include:

- Recovery and rehabilitation beds
- X-ray and Ultrasound
- Outpatients
- Therapies
- Sexual health
- Health visiting clinics



Midland Metropolitan Hospital



# Midland Metropolitan Hospital Design vision

The high-quality design for the new Midland Metropolitan Hospital will create a state-of-the-art landmark building that will serve the 530,000 people living in Sandwell and West Birmingham.

To complement the building there will be a significant amount of public realm that includes spaces for people to enjoy and relax.

Diverse open space



The hospital's design has been driven by a number of key factors:

- Integrated landscape design with a large, flexible community green to the south, with the bulk of the building pushed to the north of the site
- A common sense approach to clinical design
- Design at a human scale
- An uncluttered and legible design
- A simple, clear structural grid throughout
- An active canal edge

A sky and winter garden



Safe, secure areas with pleasant views



A simple, clear structural grid throughout



Good-quality single bedrooms

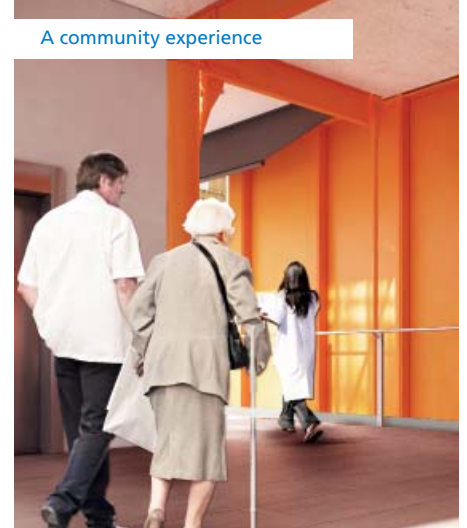


# Midland Metropolitan Hospital Benefits and employment

High-quality design



A community experience



## Improved healthcare offer

The new Midland Metropolitan Hospital will bring together acute and emergency treatment and care services on to one site, promoting better patient safety and a patient experience while ensuring the best value for money for the taxpayer.



## Job creation and opportunities

The proposed hospital will be providing Employment and Training opportunities within the West Birmingham and Sandwell area - targeting areas of high unemployment.



## Regeneration and investment

The Grove Lane site is vacant brownfield land and an ideal location for the proposed hospital with excellent potential transport links to the wider area. The investment in excess of £300 million for the new Midland Metropolitan Hospital will also act as a catalyst for the wider regeneration plans for Smethwick.



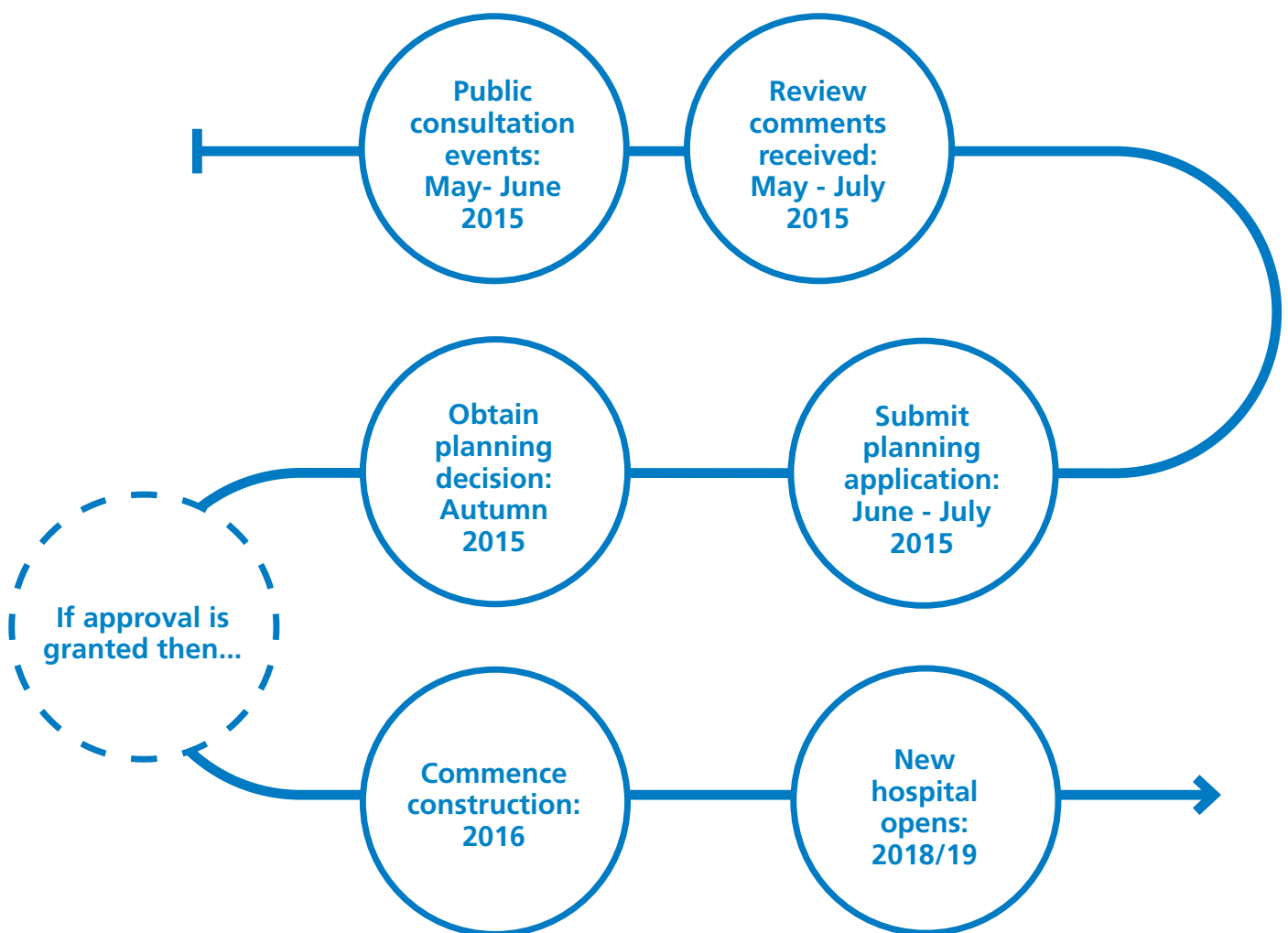
## Design

The high-quality design for the new Midland Metropolitan Hospital will create a state-of-the-art landmark building that will serve the 530,000 people living in Sandwell and West Birmingham. To complement the building there will be a significant amount of public realm that includes spaces for people to enjoy and relax.

# Midland Metropolitan Hospital

## Next steps

Thank you for taking the time to look at our plans. Please see below an indicative timetable for the planning application.



# Midland Metropolitan Hospital

## Have your say!



Please provide us with your feedback via the following methods:



A feedback form is available at this drop in session. Please feel free to complete the form and post in the box provided



Speaking with the team on freephone number 08081688296



Email any comments to [mmhconsultation@turley.co.uk](mailto:mmhconsultation@turley.co.uk)



By post to:  
Midland Met Hospital Consultation,  
Freepost RTHA-UXRT-CAGA, c/o Turley  
17 Gresse Street London, W1T 1QL